



Indicators *of* Community Strength

**CHILD HEALTH &
WELL-BEING
INDICATORS**

*Greater Richmond &
Petersburg Region*

August 2010

Child Health & Well-Being Indicators



United Way of Greater
Richmond & Petersburg

The child health & well-being indicators attempt to communicate the general condition of children under the age of 18. Children who are in good health and are in a healthy environment are more likely to have proper brain development and healthy social and emotional development.

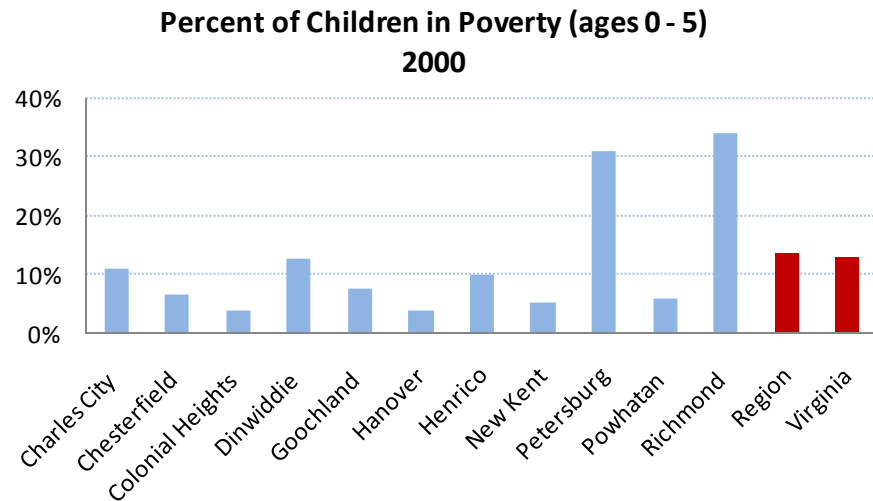
The child health & well-being indicators include:

- Children in Poverty (ages 0 – 5)..... 19
- Children in Poverty (ages 0 – 17)..... 20
- Students Approved for Free or Reduced Price School Lunches..... 22
- Teen Pregnancy Rate (per 1,000 females ages 10-19)..... 23
- Teen Pregnancies and Live Births by Age..... 24
- Low Weight Births (less than 2,500 grams).....25
- Women Who Received Prenatal Care in First 13 Weeks..... 26
- Births to Single Mothers..... 27
- Births to Mothers with Less than a 12th Grade Education..... 28
- Infant Mortality Rate (per 1,000 live births)..... 29
- Child Abuse and Neglect Rate (per 1,000 children under age 18)..... 30

Child Poverty (Ages 0-5)

***Why is this important?** Research indicates that children raised in poverty are disproportionately exposed to risk factors like environmental toxins, inadequate nutrition and low quality child care, which can negatively affect their health and development.*

Percent (and Number) of Children in Poverty (ages 0-5)	
	2000
Charles City	11.1% (49)
Chesterfield	6.5% (1,341)
Colonial Heights	4.0% (39)
Dinwiddie	12.6% (211)
Goochland	7.6% (80)
Hanover	3.9% (268)
Henrico	10.1% (2,146)
New Kent	5.3% (52)
Petersburg	31.1% (789)
Powhatan	5.9% (92)
Richmond	34.0% (4,958)
Region	13.8% (10,025)
Virginia	13.1% (71,726)

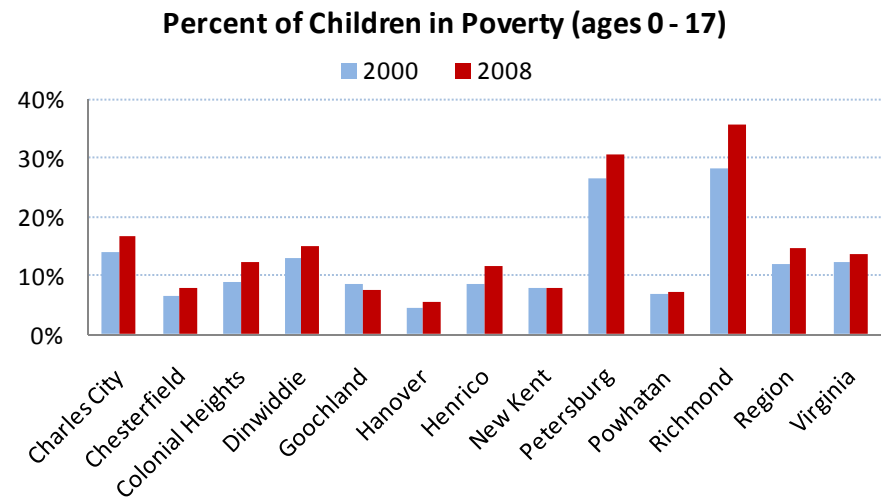


Source: U.S. Census 2000. ACS Estimates for this indicator have not been included because of the large margin of error for this smaller subpopulation.

Child Poverty (Ages 0-17)

***Why is this important?** Research indicates that children raised in poverty are disproportionately exposed to risk factors like environmental toxins, inadequate nutrition and low quality child care, which can negatively affect their health and development.*

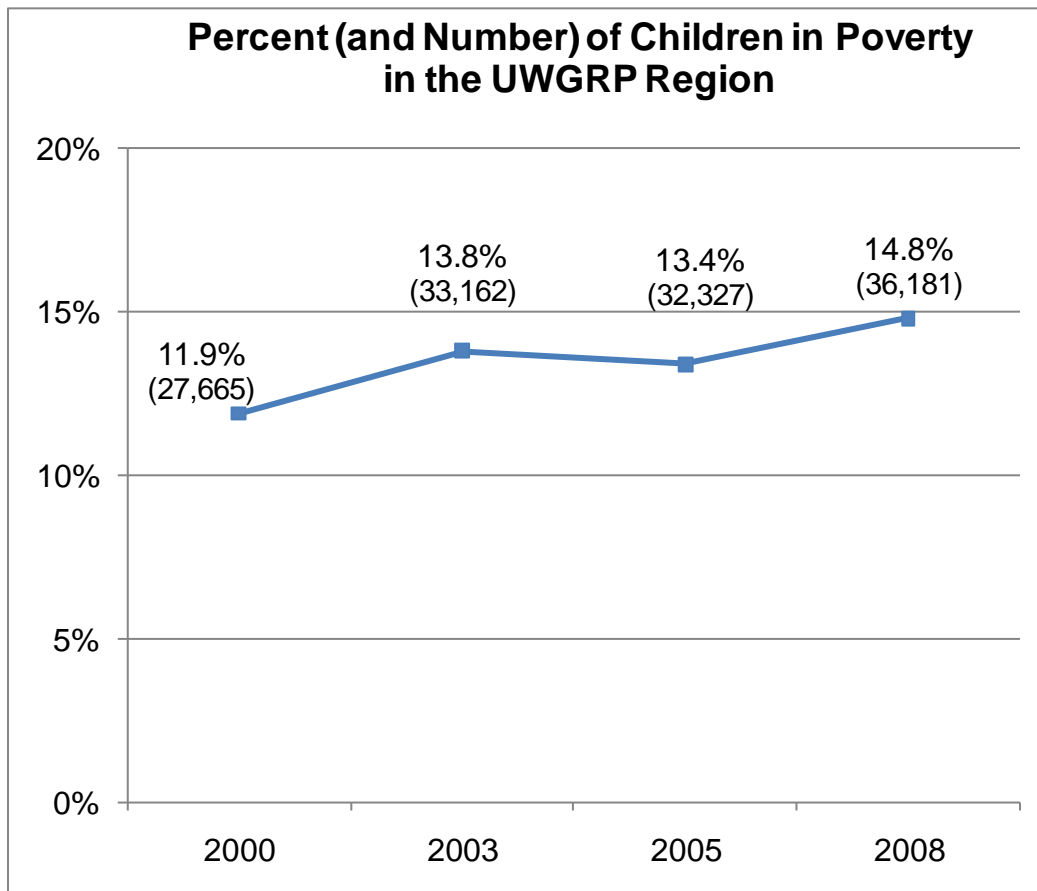
Percent (and Number) of Children in Poverty (ages 0-17)			
	2000	2005	2008
Charles City	14.1% (207)	14.9% (201)	16.7% (227)
Chesterfield	6.5% (4,763)	8.5% (6,275)	8.1% (6,094)
Colonial Heights	8.9% (332)	10.2% (389)	12.3% (461)
Dinwiddie	12.9% (739)	13.9% (779)	14.9% (842)
Goochland	8.7% (304)	7.9% (301)	7.5% (314)
Hanover	4.6% (1,074)	5.5% (1,286)	5.5% (1,274)
Henrico	8.5% (5,536)	10.3% (7,048)	11.5% (8,042)
New Kent	7.8% (257)	8.1% (280)	8.1% (307)
Petersburg	26.6% (2,149)	30.8% (2,519)	30.7% (2,473)
Powhatan	7.0% (373)	6.9% (392)	7.4% (433)
Richmond	28.2% (11,931)	29.7% (12,857)	35.6% (15,714)
Region	11.9% (27,665)	13.4% (32,327)	14.8% (36,181)
Virginia	12.2% (211,862)	13.3% (237,858)	13.6% (244,210)



Source: U.S. Census, Small Area Income and Poverty Estimates (SAIPE) for 2000-2008.*

*Note: SAIPE data sources changed beginning with the estimates for 2005; therefore, comparisons to previous years should be made with caution.

Child Poverty (Ages 0-17)



How Is the Region Doing?

The Percent of Children in Poverty Increased

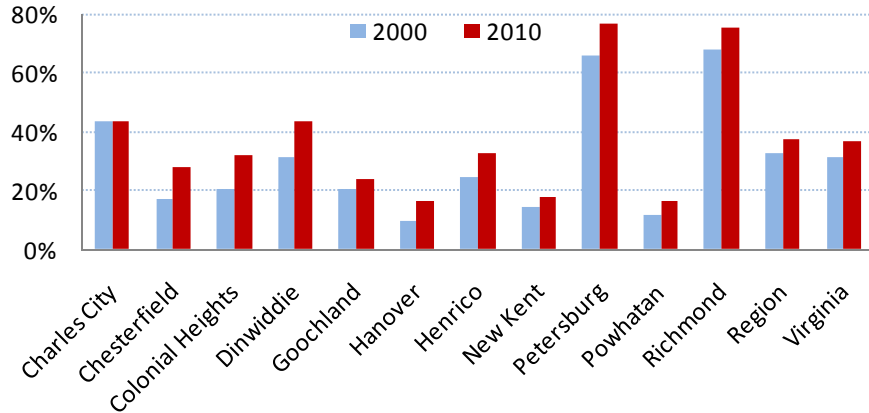
In 2000, 27,665 children ages 0-17 lived in poverty in the UWGRP region. In 2008, that number had increased to 36,181 children (an increase of 8,516 children). The region's percent of children in poverty in 2008 was higher than the state average.

Source: U.S. Census, Small Area Income and Poverty Estimates (SAIPE) for 2000-2008.*

Free/Reduced Lunches

Why is this important? This indicator is often used as a proxy indicator for the percent of children living at or near the poverty level. Children approved for free or reduced lunches live in families with incomes below 185% of the poverty level.

Percent of Students Approved for Free or Reduced Price School Lunches



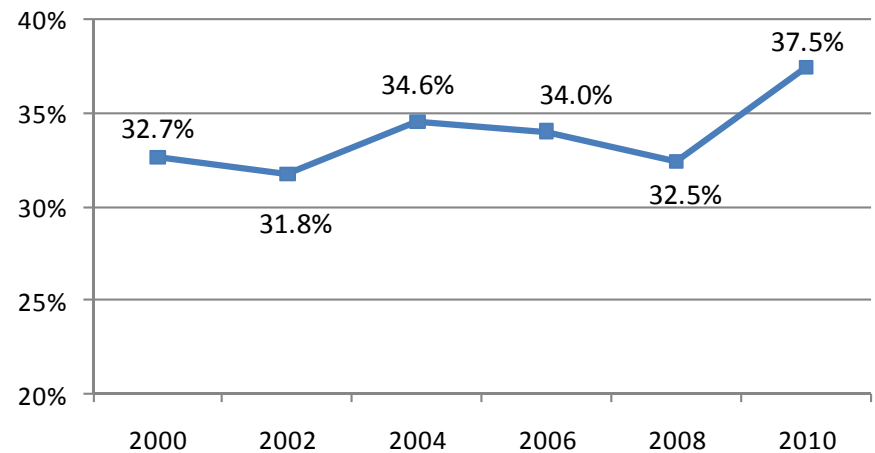
Percent of Students Approved for Free or Reduced Price School Lunches			
	2000	2005	2010
Charles City	43.6%	40.1%	44.0%
Chesterfield	17.2%	22.4%	27.8%
Colonial Heights	20.5%	24.1%	32.0%
Dinwiddie	31.5%	38.1%	43.6%
Goochland	20.4%	21.7%	23.8%
Hanover	10.0%	12.4%	16.6%
Henrico	24.6%	27.5%	32.8%
New Kent	14.6%	14.4%	17.6%
Petersburg	65.9%	69.1%	76.6%
Powhatan	11.5%	12.9%	16.8%
Richmond	67.8%	68.8%	75.3%
Region	32.7%	33.8%	37.5%
Virginia	31.4%	33.5%	37.2%

How Is the Region Doing?

Students Approved for Free or Reduced Lunches Increased

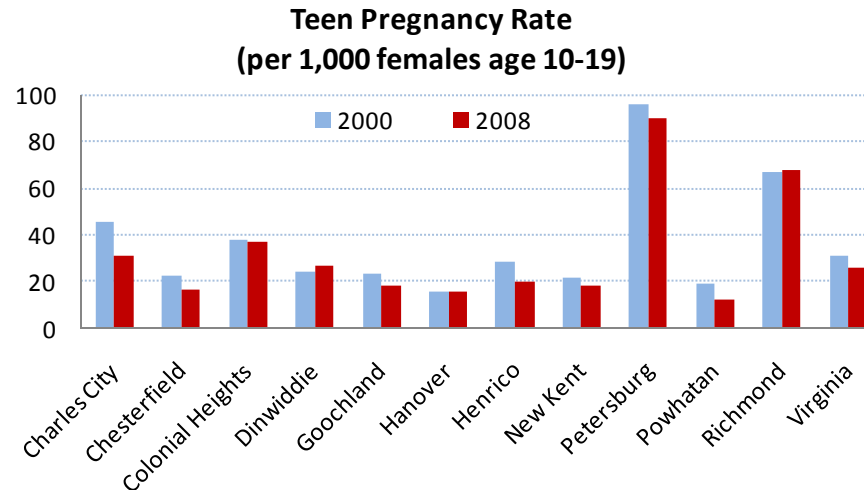
The region has seen an increase in the number of students approved for free or reduced school lunches (from 41,424 students in 2000 to 55,892 in 2010). The state average also increased.

Percent of Students Approved for Free or Reduced School Lunches in the UWGRP Region



Teen Pregnancy

***Why is this important?** Teen pregnancy and birth are associated with a range of negative outcomes for the teenage mothers and their children. These outcomes include lack of early and adequate prenatal care, a greater chance to conceive a second child while still a teen, a high risk of health problems for both mother and child, low attainment and a high risk of lifelong poverty for both mother and child.*



Teen Pregnancy Rate (per 1,000 females age 10-19)			
	2000	2005	2008
Charles City	45.6	31.3	31.3
Chesterfield	22.5	18.3	16.3
Colonial Heights	37.7	54.4	36.8
Dinwiddie	24.6	20.7	26.5
Goochland	23.6	14.1	18.1
Hanover	16.1	15.7	15.5
Henrico	28.4	20.4	20.2
New Kent	22.0	20.3	18.4
Petersburg	96.0	73.0	90.1
Powhatan	19.0	12.3	11.9
Richmond	67.0	71.8	68.2
Virginia	31.5	26.5	26.3

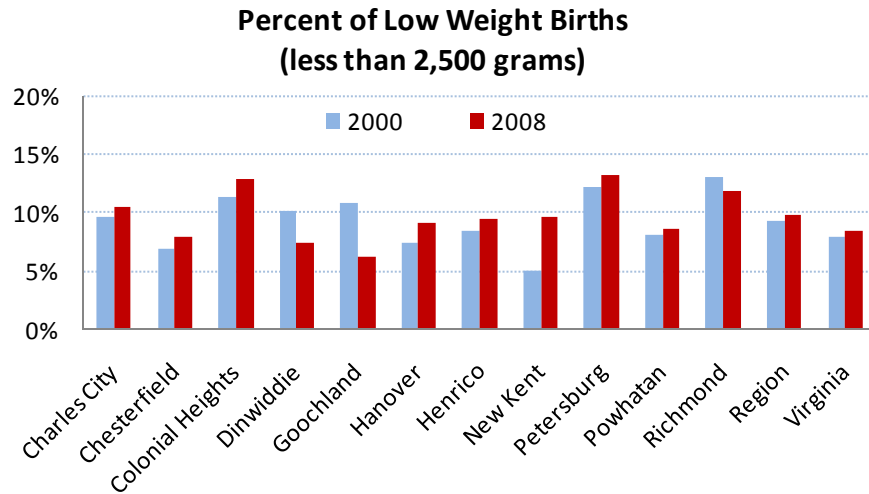
Teen Pregnancy

Number of Teen Pregnancies by Age 2008			
	Under 15	15-17	18-19
Charles City	0	2	10
Chesterfield	5	111	243
Colonial Heights	1	13	24
Dinwiddie	2	15	27
Goochland	1	0	19
Hanover	2	34	70
Henrico	8	96	268
New Kent	0	8	11
Petersburg	1	51	135
Powhatan	1	3	15
Richmond	30	294	592
Region	51	627	1,414
Virginia	240	3,686	9,307

Number of Live Births by Age 2008			
	Under 15	15-17	18-19
Charles City	0	0	5
Chesterfield	3	72	157
Colonial Heights	0	6	13
Dinwiddie	1	10	24
Goochland	0	0	10
Hanover	1	17	44
Henrico	3	69	205
New Kent	0	3	8
Petersburg	0	34	76
Powhatan	0	2	9
Richmond	8	142	313
Region	16	355	864
Virginia	106	2,369	6,427

Low Weight Births

Why is this important? An infant's survival and physical and mental growth are strongly related to a weight of 5.5 lbs or more at birth. Newborns weighing less than that are at increased risk for developmental delays and other health problems.

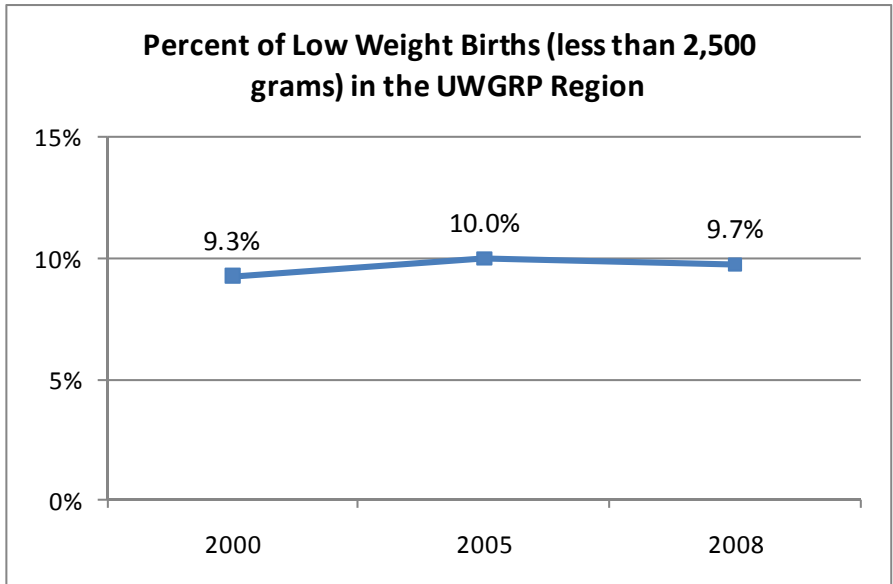


How Is the Region Doing?

No Significant Change

The percent of low birth rates for the region has remained steady between 9% and 10%. The region has a slightly higher percentage of low weight births compared to the state average. In 2008, 1,352 infants were born with low birth weights in the UWGRP region.

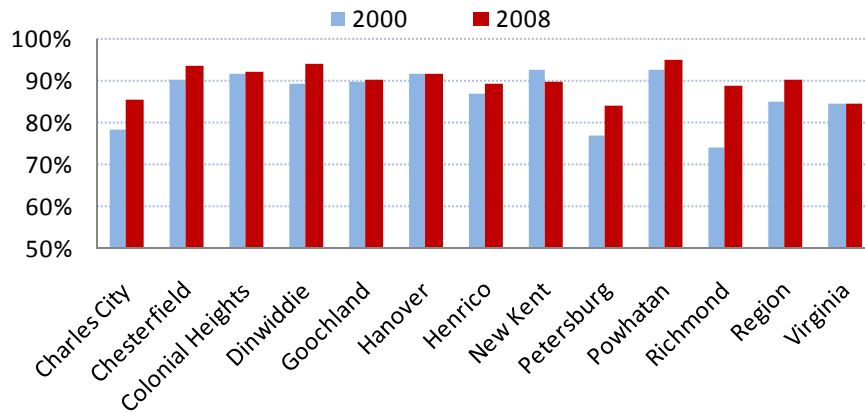
Percent of Low Weight Births (less than 2,500 grams)			
	2000	2005	2008
Charles City	9.6%	11.4%	10.5%
Chesterfield	6.8%	8.8%	7.9%
Colonial Heights	11.4%	9.5%	12.8%
Dinwiddie	10.2%	12.4%	7.5%
Goochland	10.8%	7.6%	6.2%
Hanover	7.5%	7.7%	9.2%
Henrico	8.5%	9.3%	9.5%
New Kent	5.1%	8.6%	9.6%
Petersburg	12.2%	15.7%	13.3%
Powhatan	8.1%	4.6%	8.7%
Richmond	13.0%	12.8%	11.9%
Region	9.3%	10.0%	9.7%
Virginia	8.0%	8.2%	8.4%



Prenatal Care

***Why is this important?** Research has demonstrated that pregnant women who receive proper prenatal care early in their pregnancies tend to deliver healthier babies than women who do not. Inadequate prenatal care, measured by initial prenatal visits occurring after the first trimester, has also been linked to low birth weight.*

Percent of Women Who Received Prenatal Care in First 13 Weeks



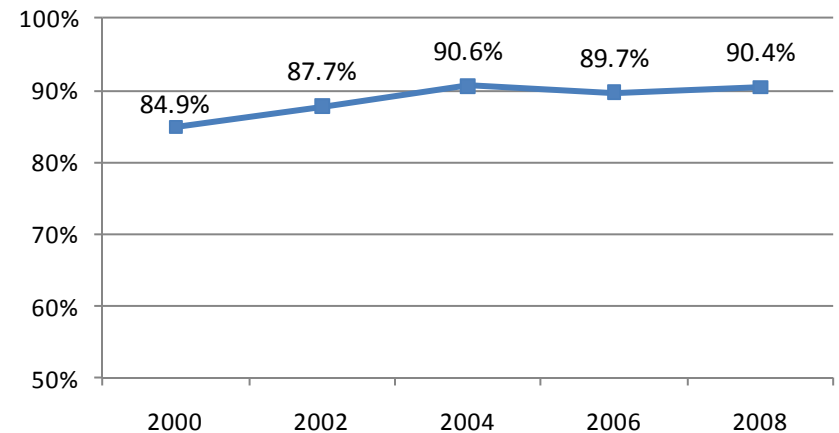
Percent of Women Who Received Prenatal Care in First 13 Weeks			
	2000	2005	2008
Charles City	78.1%	84.8%	85.5%
Chesterfield	89.9%	92.2%	93.3%
Colonial Heights	91.7%	90.5%	92.1%
Dinwiddie	89.4%	92.9%	94.0%
Goochland	89.7%	90.9%	90.0%
Hanover	91.4%	91.2%	91.6%
Henrico	86.9%	90.0%	89.2%
New Kent	92.4%	87.4%	89.7%
Petersburg	77.0%	84.3%	84.2%
Powhatan	92.7%	93.3%	95.1%
Richmond	73.9%	86.9%	88.7%
Region	84.9%	89.9%	90.4%
Virginia	84.6%	84.6%	84.6%

How Is the Region Doing?

Percent of Women Receiving Prenatal Care Increased

The percent of women receiving prenatal care in the first 13 weeks has increased since 2000. The average for the region was higher than the state average in 2008. In 2008, although 90% in the UWGRP region received prenatal care in the first 13 weeks, 1,330 mothers did not.

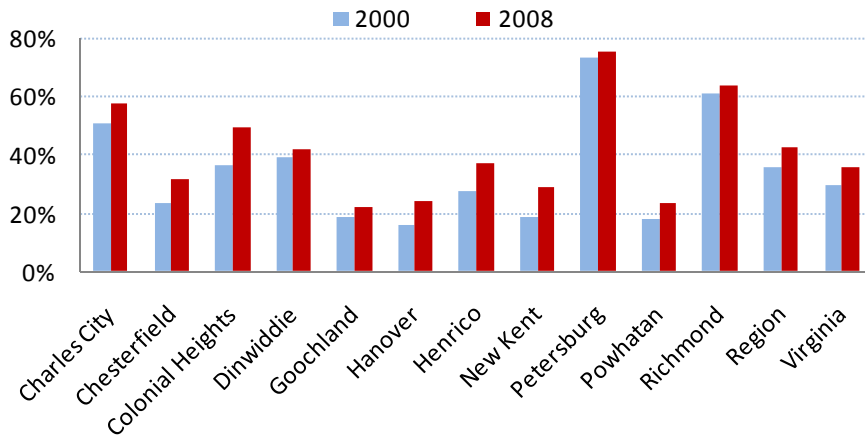
Percent of Women Who Received Prenatal Care in First 13 Weeks in UWGRP Region



Births to Single Mothers

***Why is this important?** Women who give birth outside of marriage tend to be more disadvantaged than their married counterparts. They generally have lower incomes, lower education levels and greater dependence on welfare assistance than married mothers. Children born to unmarried mothers are more likely to have low educational attainment and occupational status, to live in poverty and to have premarital births themselves.*

Percent of Births to Single Mothers



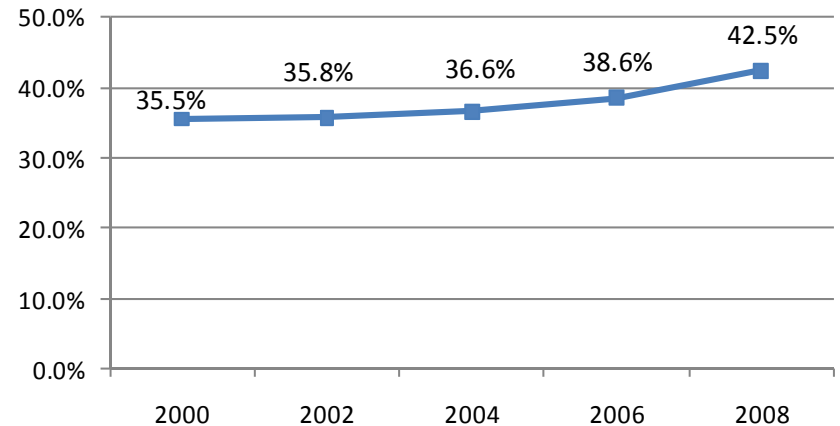
Percent of Births to Single Mothers			
	2000	2005	2008
Charles City	50.7%	50.6%	57.9%
Chesterfield	23.8%	27.9%	31.5%
Colonial Heights	36.8%	46.1%	49.2%
Dinwiddie	39.4%	34.1%	41.8%
Goochland	18.7%	17.7%	22.5%
Hanover	15.7%	19.7%	24.0%
Henrico	27.6%	32.2%	37.1%
New Kent	18.5%	24.7%	28.8%
Petersburg	73.2%	73.6%	75.1%
Powhatan	17.8%	16.0%	23.8%
Richmond	61.4%	61.2%	63.7%
Region	35.5%	37.8%	42.5%
Virginia	30.0%	32.2%	35.8%

How Is the Region Doing?

Births to Single Mothers Increased

Of the 13,873 births in the region in 2008, 5,892 were to single mothers. Percentages for the region have been consistently higher than the state average. In Petersburg, 3 out of every 4 births are to single mothers.

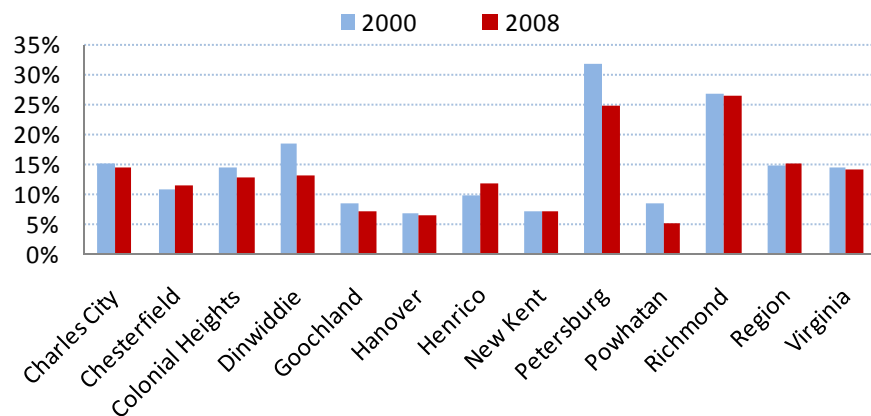
Percent of Births to Single Mothers in UWGRP Region



Births to Mothers with Less than 12th Grade Education

Why is this important? A parent's level of educational attainment is an important indicator of present and future family well-being. Maternal education has been directly associated with children's developmental outcomes such as cognitive and language development.

Births to Mothers with Less than 12th Grade Education



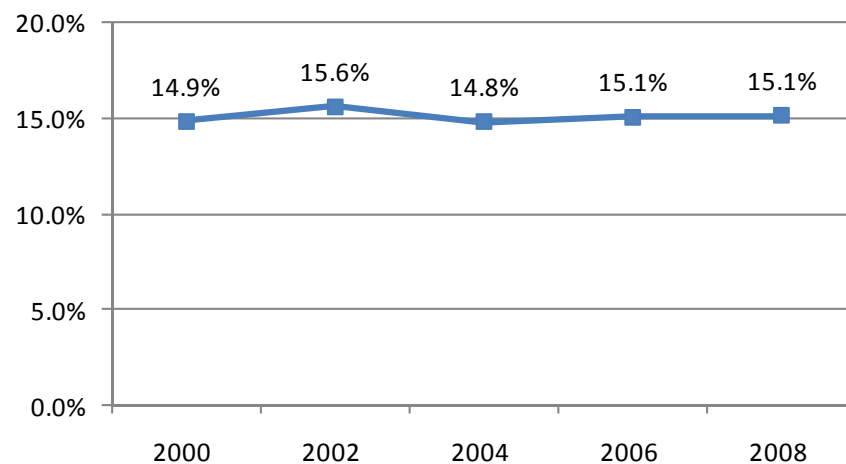
How Is the Region Doing?

No Significant Change

Percent of births to mothers with less than a 12th grade education has remained steady around 15% for the region. The average for the state is slightly lower.

Births to Mothers with Less than 12th grade Education			
	2000	2005	2008
Charles City	15.1%	13.9%	14.5%
Chesterfield	10.6%	11.9%	11.6%
Colonial Heights	14.5%	20.7%	12.8%
Dinwiddie	18.3%	12.4%	13.1%
Goochland	8.4%	7.1%	7.2%
Hanover	6.8%	5.5%	6.5%
Henrico	9.8%	10.4%	11.7%
New Kent	7.0%	6.3%	7.1%
Petersburg	31.7%	28.3%	24.7%
Powhatan	8.5%	5.3%	5.3%
Richmond	26.7%	28.3%	26.3%
UWGRP	14.9%	15.1%	15.1%
Virginia	14.6%	14.8%	14.2%

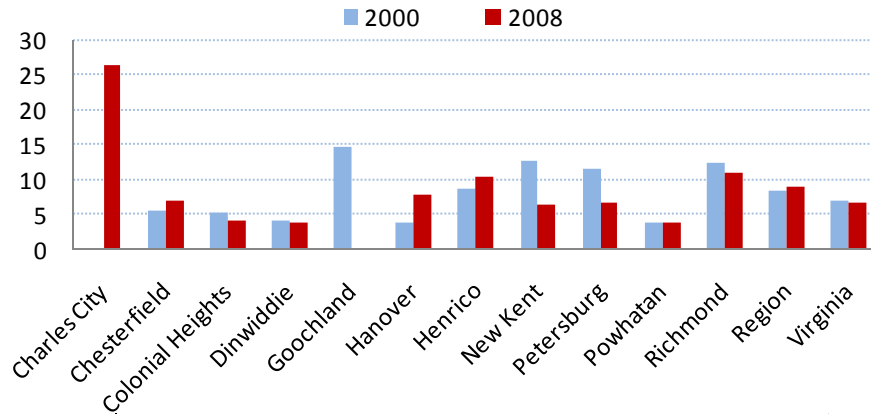
Births to Mothers with less than 12th grade education in the UWGRP Region



Infant Mortality Rate

Why is this important? Infant mortality is an important indicator of the health of a community because it is associated with a variety of factors such as maternal health, quality and access to medical care, socioeconomic conditions and public health practices.

Infant Mortality Rate (per 1,000 live births)



Infant Mortality Rate (per 1,000 live births)			
	2000	2005	2008
Charles City	0.0	12.7	26.3*
Chesterfield	5.6	7.9	7.0
Colonial Heights	5.2	4.3	4.1
Dinwiddie	4.1	3.7	3.7
Goochland	14.8	5.1	0.0
Hanover	3.8	4.8	7.8
Henrico	8.6	11.2	10.3
New Kent	12.7	0.0	6.4
Petersburg	11.4	16.3	6.6
Powhatan	3.9	0.0	3.8
Richmond	12.4	13.2	10.9
Region	8.3	9.7	9.0
Virginia	6.8	7.4	6.7

* Please note that Charles City had 2 infant deaths in 2008. The county's low number of total births causes the rate to look exceptionally high for that year.

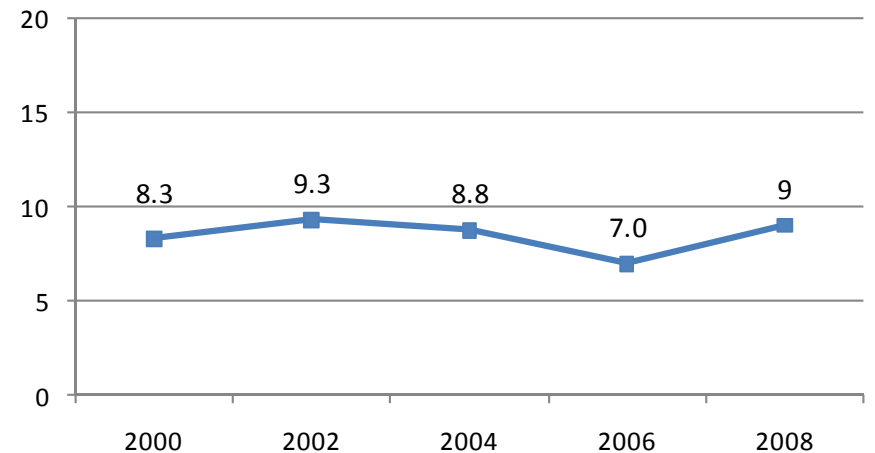
Note: The infant mortality rate is defined as the number of infants who die between birth and one year of age per 1,000 live births.

How Is the Region Doing?

No Significant Change

The infant mortality rate for the region has remained steady around 9%. This is higher than the state infant mortality rate. There were 121 infant deaths in the UWGRP region in 2008.

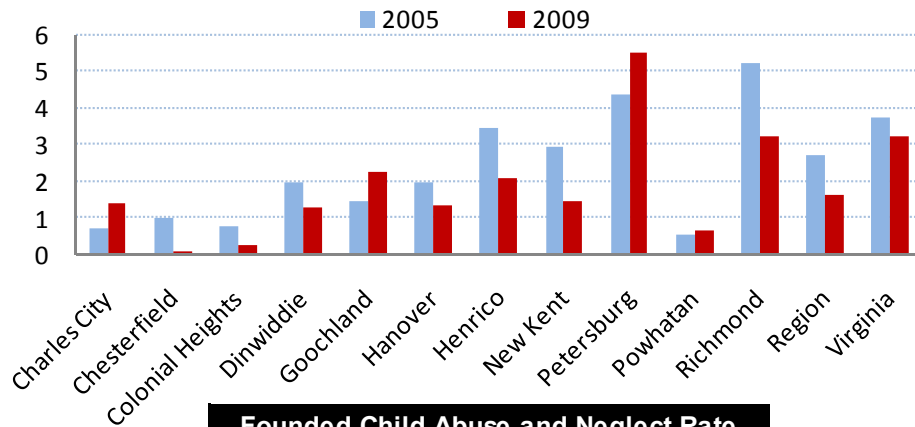
Infant Mortality Rate (per 1,000 live births) in the UWGRP Region



Child Abuse & Neglect

Why is this important? The effects and long-term ramifications of child abuse affect everyone in the community. Research shows that children who were victims of maltreatment are significantly more likely to display problem behaviors during adolescence, including serious and violent delinquency, teen pregnancy, drug use, low academic achievement and mental health problems.

**Founded Child Abuse and Neglect Rate
(per 1,000 children under age 18)**



	2005	2009
Charles City	0.7	1.4
Chesterfield	1.0	0.1
Colonial Heights	0.7	0.2
Dinwiddie	2.0	1.3
Goochland	1.5	2.2
Hanover	1.9	1.3
Henrico	3.5	2.1
New Kent	2.9	1.4
Petersburg	4.4	5.5
Powhatan	0.5	0.6
Richmond	5.2	3.2
Region	2.7	1.6
Virginia	3.8	3.2

	2005	2009
Charles City	1	2
Chesterfield	78	8
Colonial Heights	3	1
Dinwiddie	12	8
Goochland	6	10
Hanover	49	31
Henrico	255	146
New Kent	11	6
Petersburg	36	44
Powhatan	3	4
Richmond	233	142
Region	687	402
Virginia	7,011	5,921

Note: In 2000, Virginia changed the method of handling and reporting alleged incidents of child abuse and neglect. Cases are now referred for an investigation *or* for a family assessment. Most cases are now placed in the family assessment response track and fewer are traditionally investigated. Data provided is not comparable to data prior to 2001.

In 2009, 928 investigations (finding 402 founded cases) and 3,548 family assessments were completed in the region.

Source: Child Protective Services (CPS) at the Virginia Department of Social Services (DSS).

Note: It is important to note that these rates are dependent on several factors, including, the accuracy of the data reporting to each locality as well as to the State, the willingness of individuals to report child abuse and neglect and the level of follow-up by the Social Services Departments. As a result, higher founded rates do not necessarily mean that a locality has more child abuse and neglect. These rates do, however, provide a conservative estimate of actual child abuse and neglect.

Data compiled by:
United Way of Greater Richmond & Petersburg
Department of Research and Evaluation

For additional information, please contact:
Michael Mallett
P.O. Box 11807
Richmond, VA 23230
(804) 771-5870
mallettm@yourunitedway.org
www.yourunitedway.org

Additional copies of this report are available on our website at:
www.yourunitedway.org/Community_Conditions.php

© 2010 United Way of Greater Richmond & Petersburg
Permission to copy, disseminate or otherwise use information in this document is granted as long as appropriate acknowledgement is given.