

# Indicators *of* Community Strength

**OLDER ADULT  
HEALTH &  
WELL-BEING  
INDICATORS**

*Greater Richmond &  
Petersburg Region*

*August 2010*

# Older Adult Health & Well-Being Indicators



United Way of Greater  
Richmond & Petersburg

The older adult health & well-being indicators attempt to communicate the general condition of older adults age 60 and above. Older adults who are in good health are more likely to maintain their independence.

## The older adult health & well-being indicators include:

- Change in Older Adult Population (ages 65+ and 85+)..... 53
- Population Projections of Older Adults (ages 65+ and 85+)..... 54
- Older Adults (ages 65+) Living in Poverty..... 56
- Older Adults (ages 65+) Living Under 200% of the Poverty Line..... 57
- Householders Who are Both 65+ Years and Living Alone..... 58
- Older Adults (ages 65+) with a Disability..... 59
- Grandparent Caregivers..... 60

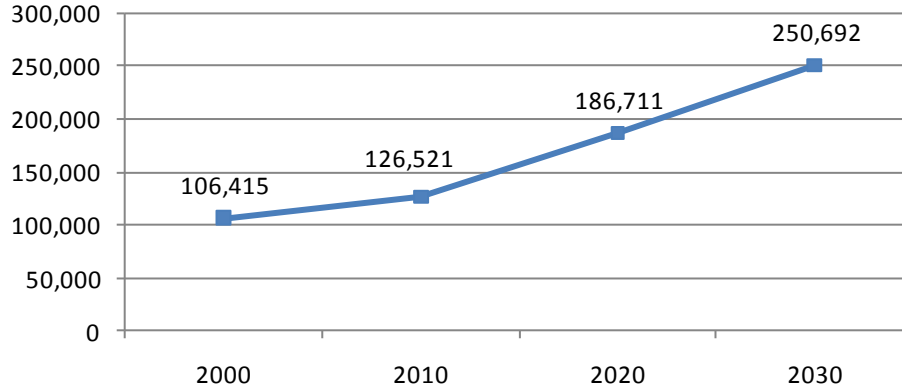
# Change in Older Adult Population

Change in Population, 65 and older			
Locality	1990 census	2000 census	2006-2008 ACS 3 YR Estimate
Charles City	710	874	n/a
Chesterfield	12,815	21,007	23,086
Colonial Heights	2,490	3,144	n/a
Dinwiddie	2,591	2,994	2,963
Goochland	1,567	2,109	2,516
Hanover	6,709	9,159	11,796
Henrico	26,984	32,601	35,595
New Kent	918	1,268	n/a
Petersburg	5,741	5,247	5,237
Powhatan	1,350	1,883	2,831
Richmond	31,181	26,129	28,391
Region	93,056	106,415	n/a

Change in Population, 85 and older			
Locality	1990 census	2000 census	2006-2008 ACS 3 YR Estimate
Charles City	57	46	n/a
Chesterfield	812	1,281	1,327
Colonial Heights	209	270	n/a
Dinwiddie	177	156	253
Goochland	143	143	117
Hanover	488	636	846
Henrico	2,743	3,279	4,614
New Kent	56	63	n/a
Petersburg	520	500	551
Powhatan	87	101	111
Richmond	3,435	2,676	3,410
Region	8,727	9,151	n/a

# Projected Growth in Older Adult Population

**Projected Growth of Population 65+ in the UWGRP Region**



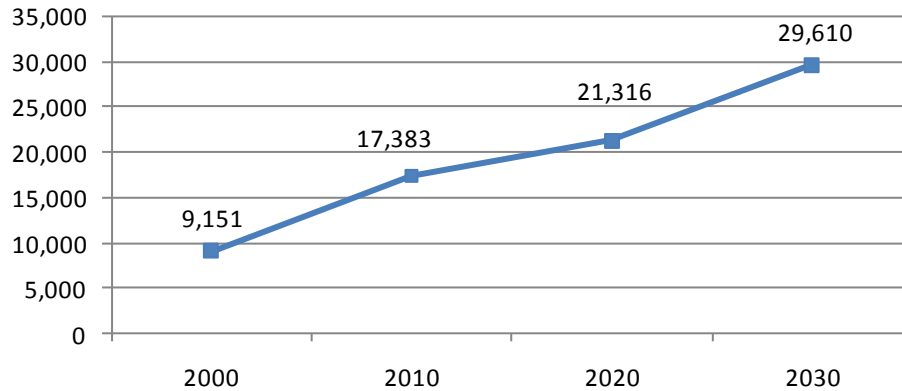
The 65+ population in the UWGRP Region is projected to more than double from 2000 to 2030

**Projected Growth in Senior Population 65 and Older, 2000-2030**

	2000	2010		2020		2030	
	Population	Predicted	% Growth from 2000	Predicted	% Growth from 2000	Predicted	% Growth from 2000
Charles City County	874	1,193	36%	1,712	96%	2,143	145%
Chesterfield County	21,007	31,006	48%	56,530	169%	79,722	280%
Colonial Heights City	3,144	3,333	6%	3,983	27%	4,980	58%
Dinwiddie County	2,994	3,561	19%	4,900	64%	6,794	127%
Goochland County	2,109	3,205	52%	5,257	149%	8,137	286%
Hanover County	9,159	13,565	48%	21,385	133%	31,107	240%
Henrico County	32,601	37,140	14%	52,401	61%	67,988	109%
New Kent County	1,268	2,297	81%	4,504	255%	7,572	497%
Petersburg City	5,247	5,084	-3%	5,884	12%	6,945	32%
Powhatan County	1,883	3,211	71%	5,196	176%	7,899	319%
Richmond City	26,129	22,926	-12%	24,959	-4%	27,405	5%
Region	106,415	126,521	19%	186,711	75%	250,692	136%

# Projected Growth in Older Adult Population

**Projected Growth of Population 85+  
in the UWGRP Region**



The 85+ population in the UWGRP Region is projected to more than triple from 2000 to 2030

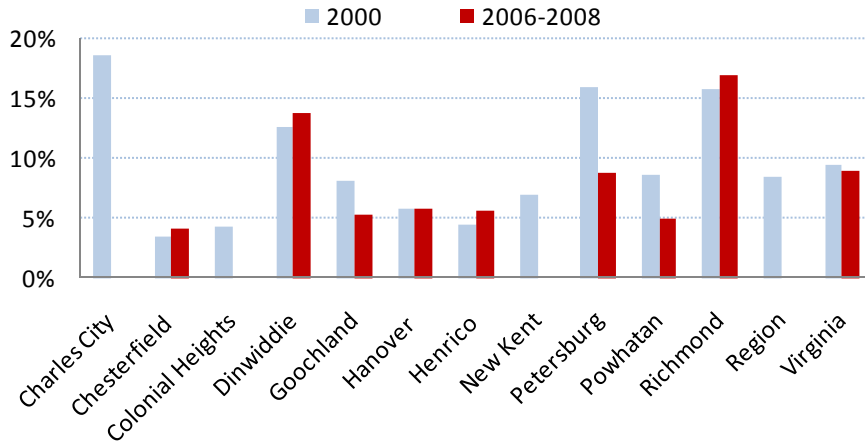
**Projected Growth in Senior Population 85 and Older, 2000-2030**

	2000	2010		2020		2030	
	Population	Predicted	% Growth from 2000	Predicted	% Growth from 2000	Predicted	% Growth from 2000
Charles City County	46	89	93%	116	152%	179	289%
Chesterfield County	1,281	3,008	135%	4,639	262%	7,838	512%
Colonial Heights City	270	472	75%	574	113%	780	189%
Dinwiddie County	156	490	214%	732	369%	1,187	661%
Goochland County	143	273	91%	348	143%	522	265%
Hanover County	636	1,525	140%	2,169	241%	3,374	431%
Henrico County	3,279	5,911	80%	6,922	111%	8,792	168%
New Kent County	63	160	154%	209	232%	332	427%
Petersburg City	500	870	74%	1,065	113%	1,452	190%
Powhatan County	101	243	141%	249	147%	319	216%
Richmond City	2,676	4,342	62%	4,293	60%	4,835	81%
Region	9,151	17,383	90%	21,316	133%	29,610	224%

# Older Adults in Poverty

***Why is this important?*** Older adults who live at or below the poverty level face limited choices and limited resources that may negatively impact their quality of life. They are at risk of lacking adequate financial resources to ensure a quality diet, housing, health care and other needs. The challenges of living at or near poverty create a living situation that becomes unmanageable for many older adults.

**Percent of Older Adults (65+) in Poverty**



**Older Adult (65+) Poverty Thresholds**

Year	1 Person 65+	2 People 65+
2000	\$8,259	\$10,419
2008	\$10,326	\$13,030

Source: U.S. Census Bureau, Housing and Household Economic Statistics Division

**Percent of Older Adults (65+) in Poverty**

	2000	2006-2008
Charles City	18.5%	N/A
Chesterfield	3.4%	4.1%
Colonial Heights	4.2%	N/A
Dinwiddie	12.6%	13.7%
Goochland	8.1%	5.2%
Hanover	5.8%	5.8%
Henrico	4.5%	5.6%
New Kent	7.0%	N/A
Petersburg	15.8%	8.7%
Powhatan	8.6%	4.9%
Richmond	15.8%	16.9%
Region	8.3%	N/A
Virginia	9.5%	8.9%

**Number of Older Adults (65+) in Poverty**

	2000	2006-2008
Charles City	171	N/A
Chesterfield	690	918
Colonial Heights	124	N/A
Dinwiddie	371	398
Goochland	163	132
Hanover	516	675
Henrico	1,340	1,755
New Kent	91	N/A
Petersburg	807	426
Powhatan	160	135
Richmond	4,038	4,660
Region	8,471	N/A
Virginia	71,545	78,008

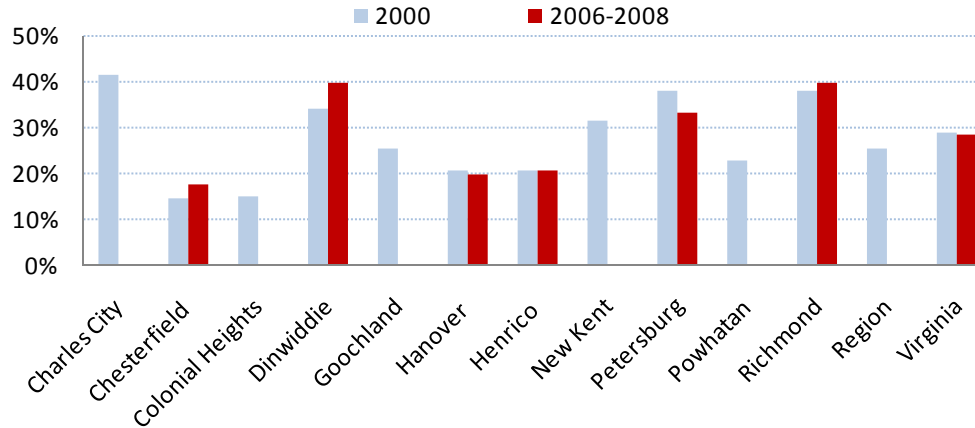
Source: U.S. Census 2000 and the American Community Survey (ACS)

Note: The ACS universe is limited to the household population and excludes the population living in institutions, college dorms and other group quarters. The ACS is only available for populations over 20,000.

# Older Adults in Poverty

**Why is this important?** Because the poverty level is only about 30% of the region's median income, a more comprehensive picture of economic vulnerability includes individuals in households with income up to 200% of the poverty level.

**Percent of Older Adults (65+) Living Under 200% of Poverty**



Percent of Older Adults (65+) Living Under 200% of Poverty		
	2000	2006-2008
Charles City	41.3%	N/A
Chesterfield	14.6%	17.7%
Colonial Heights	14.8%	N/A
Dinwiddie	34.0%	39.8%
Goochland	25.3%	N/A
Hanover	20.4%	19.8%
Henrico	20.5%	20.6%
New Kent	31.5%	N/A
Petersburg	38.0%	33.1%
Powhatan	22.8%	N/A
Richmond	38.1%	39.9%
Region	25.3%	N/A
Virginia	28.9%	28.3%

Number of Older Adults (65+) Living Under 200% of Poverty		
	2000	2006-2008
Charles City	381	N/A
Chesterfield	2,923	3,980
Colonial Heights	434	N/A
Dinwiddie	1,004	1,159
Goochland	506	N/A
Hanover	1,820	2,315
Henrico	6,144	6,497
New Kent	412	N/A
Petersburg	1,937	1,628
Powhatan	426	N/A
Richmond	9,731	11,001
Region	25,718	N/A
Virginia	217,549	247,572

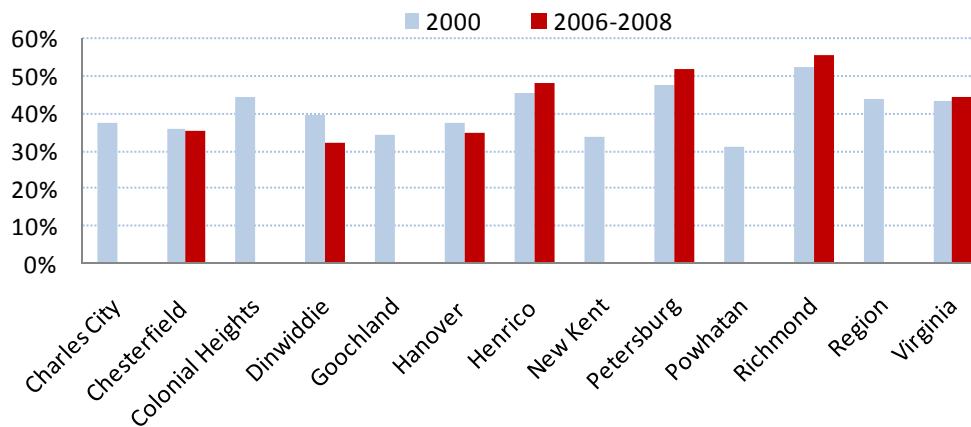
Source: U.S. Census 2000 and the American Community Survey (ACS)

Note: The ACS universe is limited to the household population and excludes the population living in institutions, college dorms and other group quarters. The ACS is only available for populations over 20,000.

# Older Adults Living Alone

***Why is this important?** Household structure can impact a person's well-being. Older adults who live alone can be at risk for reduced quality of life if there are co-existing conditions such as poverty, lack of vehicle availability and/or illness, disease or disability. It is important to understand the number of older adults who are living alone because they may require more support to live independently.*

**Percent of Older Adult Householders (65+) Who are Living Alone**



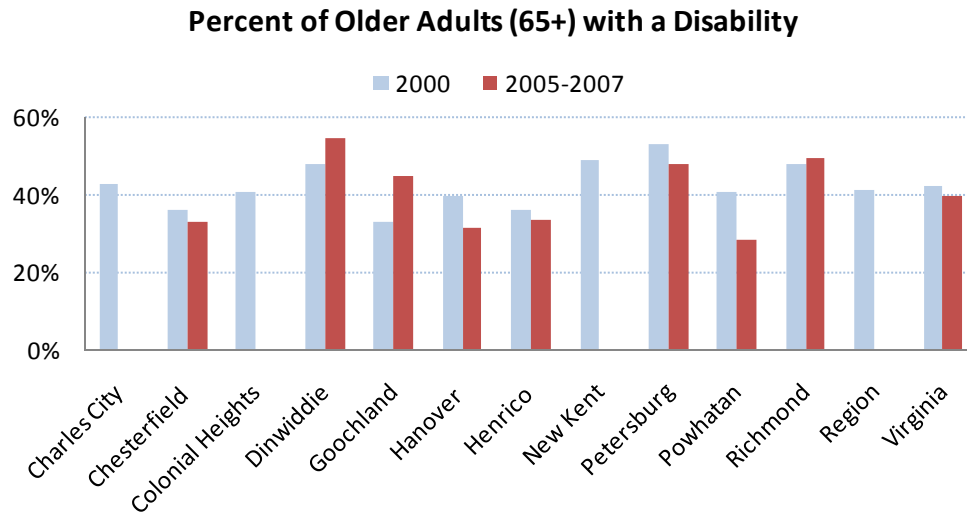
Percent of Older Adult Householders (65+) Who are Living Alone		
	2000	2006-2008
Charles City	37.5%	N/A
Chesterfield	35.7%	35.4%
Colonial Heights	44.3%	N/A
Dinwiddie	39.4%	32.4%
Goochland	34.4%	N/A
Hanover	37.6%	34.6%
Henrico	45.7%	47.9%
New Kent	33.7%	N/A
Petersburg	47.3%	52.1%
Powhatan	31.2%	N/A
Richmond	52.2%	55.6%
Region	44.0%	N/A
Virginia	43.1%	44.4%

Number of Older Adult Householders (65+) Who are Living Alone		
	2000	2006-2008
Charles City	225	N/A
Chesterfield	4,473	4,959
Colonial Heights	866	N/A
Dinwiddie	778	624
Goochland	456	N/A
Hanover	2,113	2,486
Henrico	9,145	10,018
New Kent	275	N/A
Petersburg	1,617	1,671
Powhatan	352	N/A
Richmond	9,251	10,789
Region	29,551	N/A
Virginia	216,588	249,461

Source: U.S. Census 2000 and the American Community Survey (ACS)

# Older Adults with a Disability

***Why is this important?*** Disability data are of interest because of the relationship between health and overall well-being. Older adults with disabilities are more likely to have greater health care costs/needs and transportation needs. They are also likely to have fewer opportunities for community engagement, which can lead to an increased risk of depression.



Percent of Older Adults (65+) with a Disability		
	2000	2005-2007
Charles City	42.9%	N/A
Chesterfield	35.9%	33.0%
Colonial Heights	40.7%	N/A
Dinwiddie	48.0%	54.4%
Goochland	33.0%	44.9%
Hanover	39.6%	31.7%
Henrico	36.3%	33.7%
New Kent	48.8%	N/A
Petersburg	53.2%	47.7%
Powhatan	40.6%	28.6%
Richmond	48.1%	49.7%
Region	41.0%	N/A
Virginia	42.1%	39.7%

Source: U.S. Census 2000 and the 2005-2007 American Community Survey (ACS)

# Grandparents Caring for Grandchildren

*Why is this important? Taking care of a grandchild may create or exacerbate a number of health and financial hardships for a grandparent caretaker. Grandparent caregivers are more likely to live in poverty than other grandparents and they are at risk for poor physical and mental health.*

In 2000, 81% of grandparents caregivers in the region had been caring for their grandchildren for at least 1 year. 46% had been caring for their grandchildren for 5 years or more. (The partial estimates available for 2006-2008 showed similar percentages.)

For the five localities with poverty data available for 2006-2008, grandparent caregivers were twice as likely to be in poverty than grandparents who were not caregivers.

22% of grandparent caregivers were living below the poverty level compared to only 11% of grandparents who were not caregivers.

(Data includes Chesterfield, Hanover, Henrico, Petersburg, and Richmond)

Number of Grandparents Caring for Grandchildren		
	2000	2006-2008
Charles City	169	N/A
Chesterfield	1,672	1,555
Colonial Heights	109	N/A
Dinwiddie	254	457
Goochland	141	N/A
Hanover	551	553
Henrico	1,750	1,325
New Kent	171	N/A
Petersburg	576	415
Powhatan	106	N/A
Richmond	2,272	1,617
Region	7,771	N/A
Virginia	59,464	60,834

The Census Bureau defines a grandparent caregiver as a grandparent who is financially responsible for food, shelter, clothing, child care, etc. for any or all grandchildren under 18 years old living in the household.

Source: U.S. Census 2000 and the American Community Survey (ACS)

*Data compiled by:*  
**United Way of Greater Richmond & Petersburg**  
**Department of Research and Evaluation**

*For additional information, please contact:*

**Michael Mallett**  
**P.O. Box 11807**  
**Richmond, VA 23230**  
**(804) 771-5870**  
**mallettm@yourunitedway.org**  
**www.yourunitedway.org**

**Additional copies of this report are available on our website at:**  
**[www.yourunitedway.org/Community\\_Conditions.php](http://www.yourunitedway.org/Community_Conditions.php)**

**© 2010 United Way of Greater Richmond & Petersburg**  
*Permission to copy, disseminate or otherwise use information in this document is granted as long as appropriate acknowledgement is given.*