

# GIVING THAT GETS RESULTS

Your gift to United Way's **Community Action Fund** meets the most pressing needs in the Greater Richmond and Petersburg region. You have helped thousands of local people who now have better lives and brighter futures — thanks to you!



**United Way of Greater Richmond & Petersburg**

## EDUCATION



### Young Children

- You are preparing children to be successful in school and in life. The quality child care and home visiting programs funded by United Way serve more than 2,400 children.
- Children need nurturing families, quality education and positive role models to help them grow into adulthood. Your United Way gift provides these opportunities for more than 30,000 at-risk children.



### School-Age Youth

- Local students are earning better grades and spending more time in school because of you. More than 12,000 youth are having more success in school through United Way.

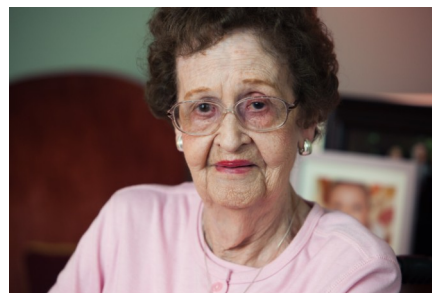
## INCOME



### Individuals and Families

- You are helping children and families stay in their homes, pay utility bills, and eat. Through the Community Action Fund, emergency financial assistance has been made available to more than 11,000 local people.
- Financial stability is the key to helping hard-working people stay out of crisis. Through United Way, more than 30,000 people have access to job training, housing assistance, emergency shelter, and case management.

## HEALTH



### Older Adults

- Adults over age 65 are remaining independent and in their homes thanks to you. Adult day care and home health services are available to more than 1,700 vulnerable older adults through the Community Action Fund.
- You are helping older adults age with dignity. Your gift to United Way ensures that more than 11,000 older adults receive meals, transportation, care and legal assistance to help them continue to live at home.

[www.yourunitedway.org](http://www.yourunitedway.org)

# TOGETHER, WE CAN CHANGE OUR COMMUNITY

When you choose United Way as your partner in giving, you choose the best way to achieve results and make a difference for children, families and older adults right here in our region. Your gift does more than just support people who are in urgent need right now — you also support meaningful, lasting change that impacts the entire community.

## *Your United Way investment ensures that you get:*

**Expertise.** United Way has the most thorough research abilities of all charities in our region. Our research identifies the pressing needs and effective solutions in our focus areas of Education, Income and Health.

**Accountability.** The investment of your hard-earned dollars is overseen by a volunteer board that ensures the strictest accountability, fiscal responsibility and careful use of your donation.

**Local focus.** Your gift helps people in the cities of Richmond, Petersburg and Colonial Heights and the counties of Charles City, Chesterfield, Dinwiddie, Goochland, Hanover, Henrico, New Kent and Powhatan. Hundreds of local volunteers, supported by United Way staff, decide where your gift can do the most good.



**Efficiency.** Your gift to the Community Action Fund goes farther — it supports 90 effective programs that must show measurable outcomes to receive funding.

**Connection.** Through United Way, you are connected to businesses, volunteers, community leaders, people and organizations — and that multiplies your impact. Together, we can accomplish more than any single person, group or organization.

**Ease in giving.** United Way makes it easy for you to help the community. Participating in a workplace campaign makes giving a convenient part of your life.

**Results.** Your gift makes a long-term impact on our community. United Way goes beyond quick fixes to create measurable change that lasts.

**United Way offers you  
the best return on your investment.**

**GIVE. ADVOCATE. VOLUNTEER.  
LIVE UNITED**



For more information, contact (804) 775-6472 or [customerservice@yourunitedway.org](mailto:customerservice@yourunitedway.org).