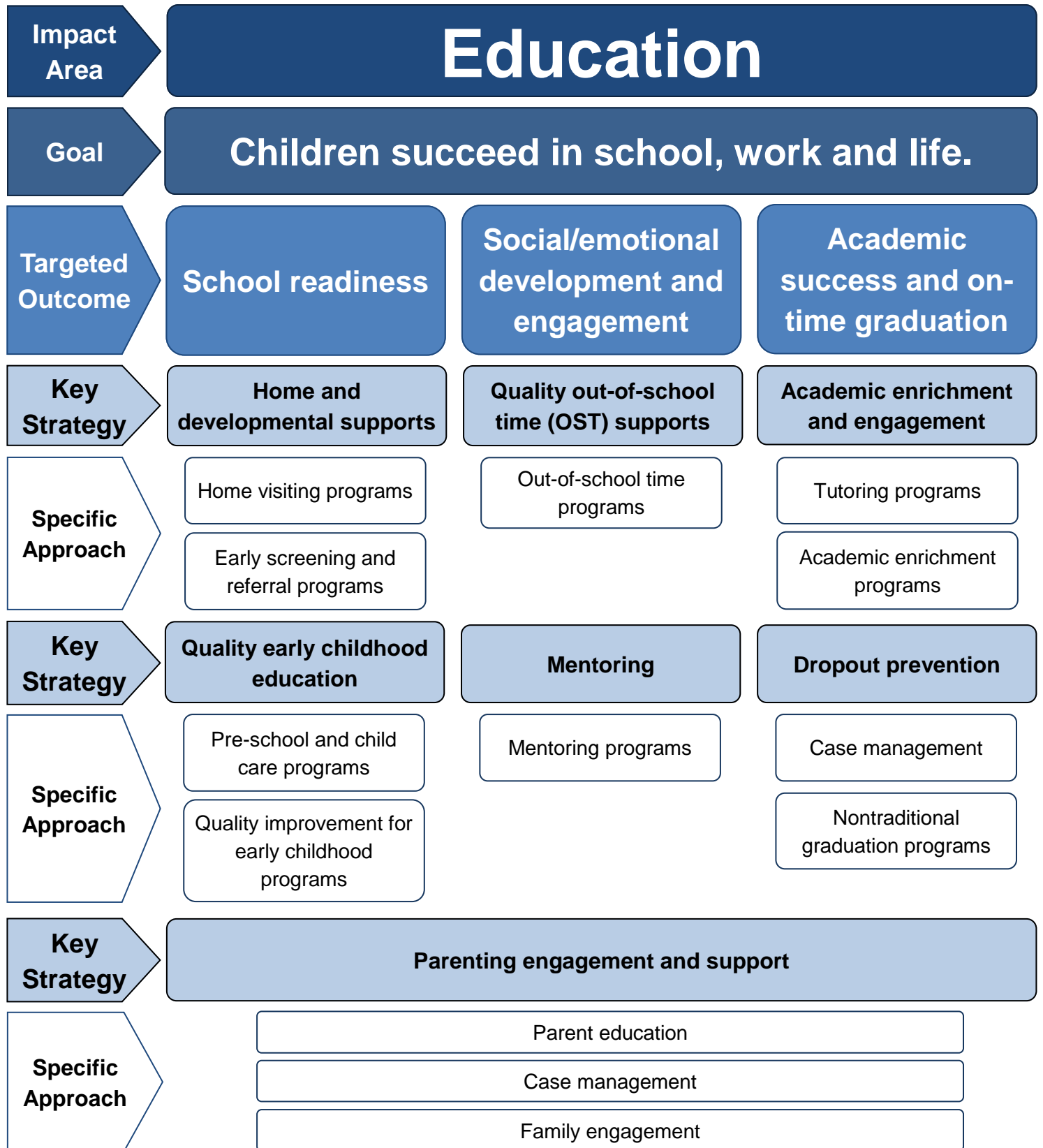


# Community Impact Funding Priorities 2015-2016



United Way of Greater  
Richmond & Petersburg



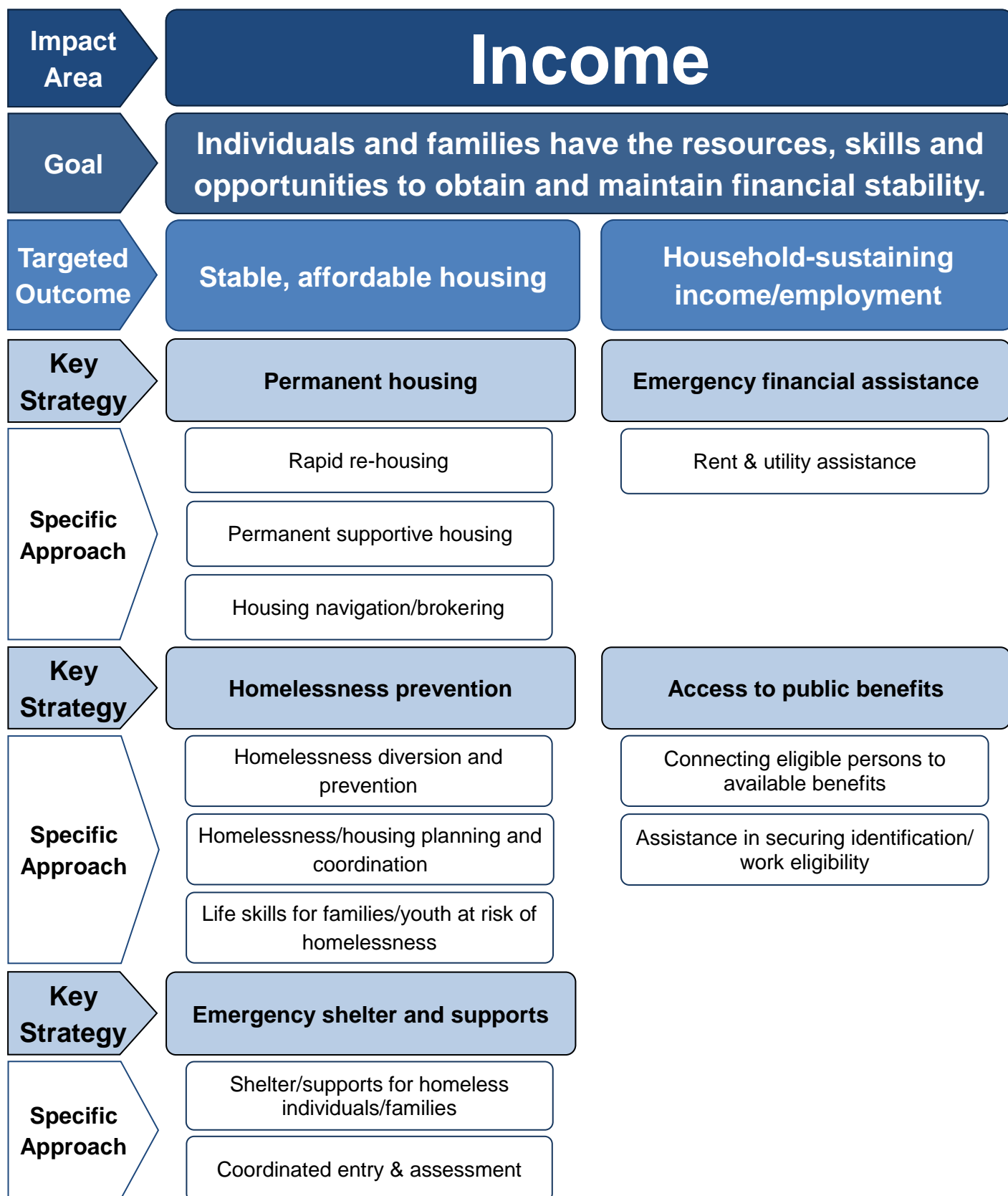
## IMPACT 2020 TARGET

Increase on-time high school graduation rate to 92.5% by 2020.

# Community Impact Funding Priorities 2015-2016



United Way of Greater  
Richmond & Petersburg



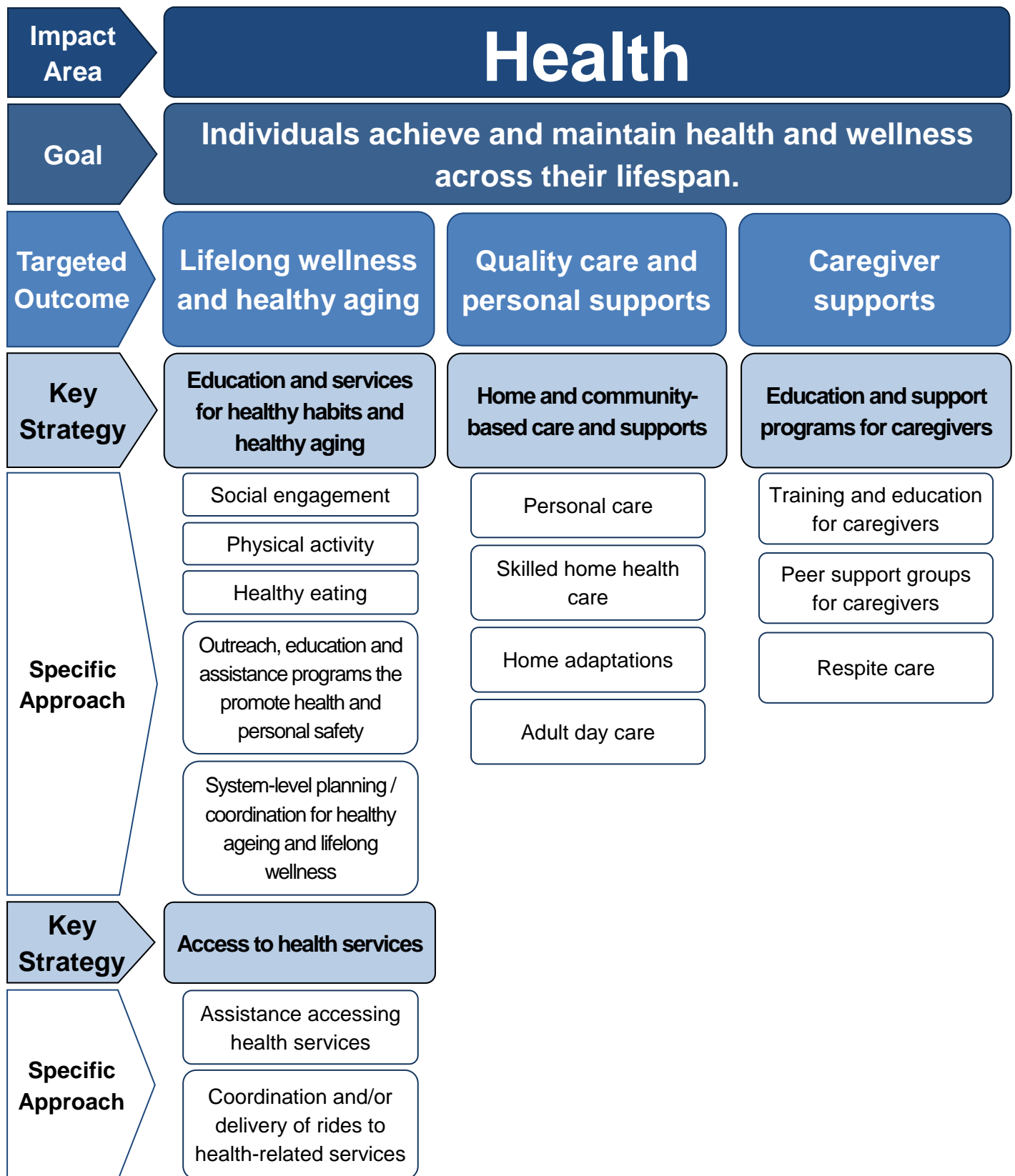
## IMPACT 2020 TARGET

25,000 Richmond-area households will achieve greater financial stability by 2020.

# Community Impact Funding Priorities 2015-2016



United Way of Greater  
Richmond & Petersburg



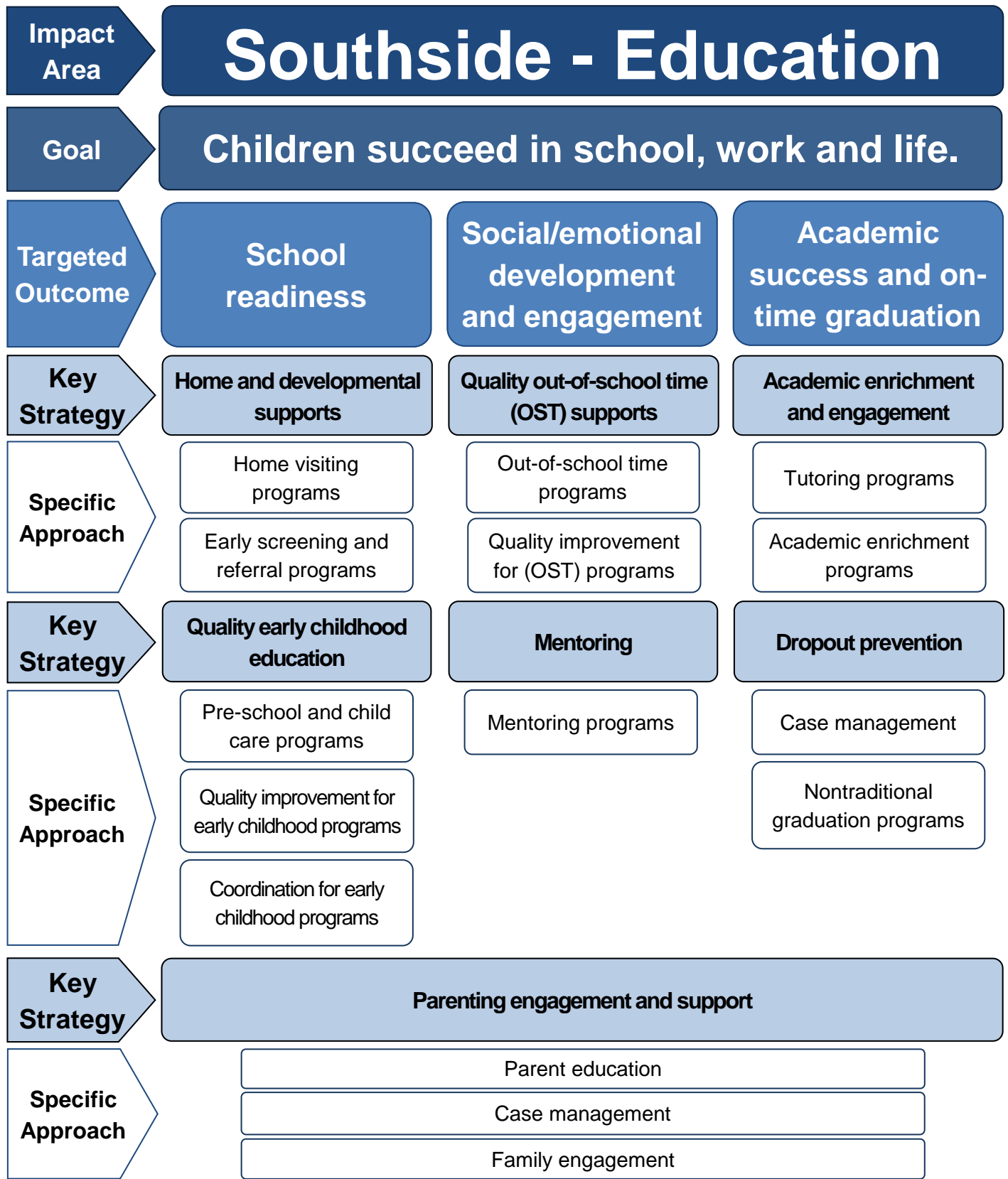
## IMPACT 2020 TARGET

Eliminate isolation for 25,000 at-risk older adults and people with disabilities by 2020.

# Community Impact Funding Priorities 2015-2016



United Way of Greater  
Richmond & Petersburg

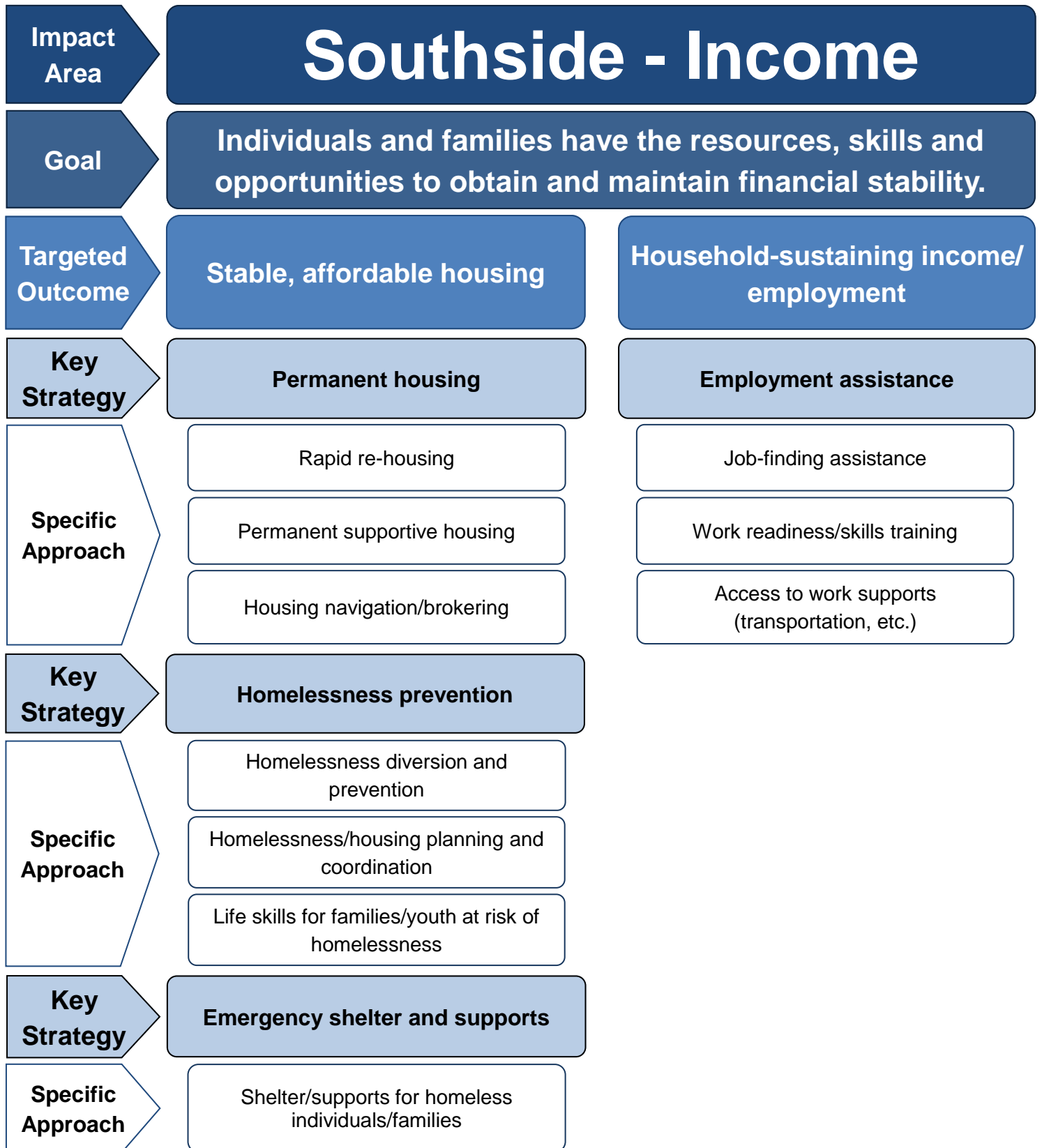


**IMPACT 2020 TARGET**  
Increase on-time high school graduation rate to 92.5% by 2020.

# Community Impact Funding Priorities 2015-2016



United Way of Greater  
Richmond & Petersburg



## IMPACT 2020 TARGET

25,000 Richmond-area households will achieve greater financial stability by 2020.