

INVESTMENT PROSPECTUS INCOME



HELPING MORE HOUSEHOLDS ACHIEVE AND MAINTAIN FINANCIAL STABILITY

UNITED WAY

We want individuals and families to secure the resources, skills, and opportunities to obtain and maintain financial stability. How do we get there? We invest in programs that promote household-sustaining income/employment, provide stable, affordable housing, and bolster savings, assets and financial literacy.

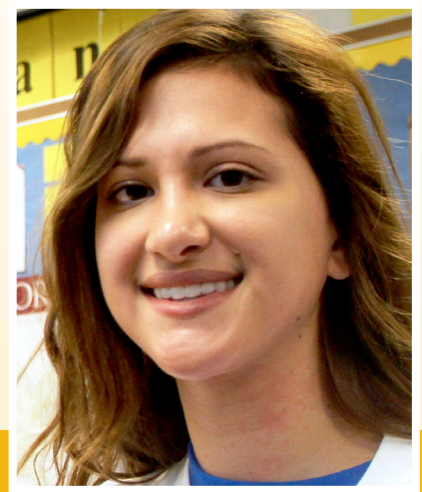
COMMUNITY INDICATORS

- From 2000 to 2013, the percent of Richmond-area residents living in poverty rose from 8.5% to 12.8%.
- 30% of Virginia households do not have adequate savings or assets to cope with an emergency or plan for the future.
- As of 2010, median household net worth in the U.S. was over \$110,000 for white households, but less than \$5,000 for African-American households.
- Homeward's January 2015 Point-in-Time count found 730 homeless adults and 88 homeless children in our region.

COMMUNITY IMPACT FUND

Your choice to give to the Community Impact Fund contributed to an investment of \$972,000 in 14 programs providing services to older adults, people with disabilities, and family caregivers.

- Access to work supports
- Credit counseling
- Debt management
- Emergency shelter
- Homelessness prevention
- Job-finding assistance
- Permanent supportive housing
- Rapid re-housing
- Rent and utility assistance



IMPACT 2020 TARGET

HELP 25,000 GREATER RICHMOND AND PETERSBURG-AREA HOUSEHOLDS ACHIEVE GREATER FINANCIAL STABILITY



United Way of Greater
Richmond & Petersburg

For more information, visit WWW.YOURUNITEDWAY.ORG

FOCUS AREA:

INCOME



HELPING MORE HOUSEHOLDS ACHIEVE AND MAINTAIN FINANCIAL STABILITY

2015-2016 COMMUNITY IMPACT FUND PROGRAM GRANTS

AGENCY	PROGRAM	TOTAL GRANT \$
CARITAS	Family Focus	\$25,000
	Single Adult Program	\$50,000
Commonwealth Catholic Charities	Homeless Point of Entry	\$80,000
Hanover Domestic Violence Task Force	Hanover Safe Place	\$85,000
Housing Families First	Building Neighbors	\$75,000
HomeAgain	Espigh Family Shelter	\$50,000
Homeward	Utilizing Data to Facilitate Systems Change in Homeless Services	\$35,000
Local Initiatives Support Corporation (LISC)	*Petersburg Financial Opportunity Center	\$45,000
Offender Aid and Restoration (OAR)	START! Reentry	\$111,000
Progressive Adult Rehabilitation Center (PARC)	*Supported Employment	\$25,000
St. Joseph's Villa	Housing Services for Unaccompanied Homeless Youth	\$76,000
Salvation Army, Central Virginia Area Command	Emergency Homeless Shelter	\$65,000
Virginia Supportive Housing	Permanent Supportive Housing	\$100,000
YWCA of Richmond	Domestic Violence Shelter	\$150,000
		TOTAL: \$972,000