

INVESTMENT PROSPECTUS

EDUCATION



HELPING CHILDREN AND YOUTH SUCCEED IN SCHOOL, WORK, AND LIFE

UNITED WAY

We want our children to succeed, in school, work, and in life. How do we get there? We invest in programs that prepare children for school, encourage their social and emotional development, and help them achieve academically and graduate on-time.

COMMUNITY INDICATORS

- 42,000 children and youth in our region live in poverty.
- One in four 3rd graders in our region are not reading at grade level.
- 1,808 children arrived at kindergarten lacking the literacy skills needed to be successful in school. That's enough students to fill 60 school busses!
- Only 89% of students in our region graduate on time. Last year, 856 students dropped out of high school.

COMMUNITY IMPACT FUND

Your choice to give to the Community Impact Fund contributed to an investment of \$2,226,000 in 32 programs providing services to children, youth, and families.

- Home visiting services
- Quality pre-school and child care
- Out-of-school-time and mentoring programs
- Academic engagement and non-traditional graduation programs
- Quality improvement for early childhood, mentoring, and out-of-school time programs



IMPACT 2020 TARGET

INCREASE OUR REGION'S ON-TIME GRADUATION RATE FROM 87.1% TO 92.5% BY 2020

For more information, visit www.YourUnitedWay.org



United Way of Greater
Richmond & Petersburg

FOCUS AREA:

EDUCATION

HELPING CHILDREN AND YOUTH SUCCEED IN SCHOOL, WORK, AND LIFE



2015-2016 COMMUNITY IMPACT FUND PROGRAM GRANTS

| AGENCY | PROGRAM | TOTAL GRANT \$ |
|--|---|---------------------------|
| Art 180 | Art Will Make Me Stronger | \$25,000 |
| Big Brothers Big Sisters Services | Mentoring | \$85,000 |
| Boys and Girls Clubs Metro Richmond | Capital One Club | \$45,000 |
| | Fairfield Court Club | \$25,000 |
| | MLK, Jr. Middle School Club | \$60,000 |
| | Southside Richmond Club | \$45,000 |
| | Petersburg Club | \$30,000 |
| Children's Home Society | Partnership for Adoptions | \$49,000 |
| ChildSavers | Outpatient Mental Health Services for Children | \$200,000 |
| | *Virginia Star Quality Initiative | \$25,000 |
| Communities in Schools of Chesterfield | In-School Services | \$50,000 |
| Communities in Schools of Richmond | In-School Services | \$75,000 |
| | Performance Learning Centers | \$25,000 |
| Family Lifeline | Greater Richmond Early Childhood Development Initiative - Home Visiting | \$289,000 |
| | Southside Early Childhood Development Initiative - Home Visiting | \$125,000 |
| Friends Association for Children | Pre-School Child Day Care | \$175,000 |
| | School-Age Child Care | \$25,000 |
| Goodwill of Central Virginia | *Youth Career Education Center - Petersburg | \$60,000 |
| Greater Richmond ARC | Infant Child Development Services | \$25,000 |
| Greater Richmond SCAN - Stop Child Abuse Now | Family Support Program | \$25,000 |
| Higher Achievement | Closing the Middle School Opportunity Gap | \$40,000 |
| Peter-Paul Development Center | Youth Program | \$91,000 |
| Petersburg Health Department | *Teen Pregnancy Prevention | \$45,000 |
| Quin Rivers Agency for Action | Healthy Families - Charles City/New Kent | \$62,000 |
| ROSMY | A Safe Place to Be Me | \$25,000 |
| Sacred Heart Center | Family Literacy Project | \$25,000 |
| Salvation Army: Richmond | Boys and Girls Club | \$100,000 |
| Southside Child Development Center | Pre-School Child Care | \$100,000 |
| Virginia Mentoring Partnership | Training and Quality Assurance for Mentoring Programs | \$25,000 |
| YMCA of Greater Richmond | School-Age Child Care | \$100,000 |
| | School-Age Child Care Petersburg | \$55,000 |
| YWCA of Richmond | Child Development Center | \$95,000 |
| | | TOTAL: \$2,226,000 |

INVESTMENT PROSPECTUS HEALTH



IMPROVING LIVES AND ELIMINATING ISOLATION

UNITED WAY

We want individuals to achieve and maintain health and wellness across their lifespan. How do we get there? We invest in programs that promote lifelong wellness and healthy aging, provide quality care and personal supports, and offer support to family caregivers.

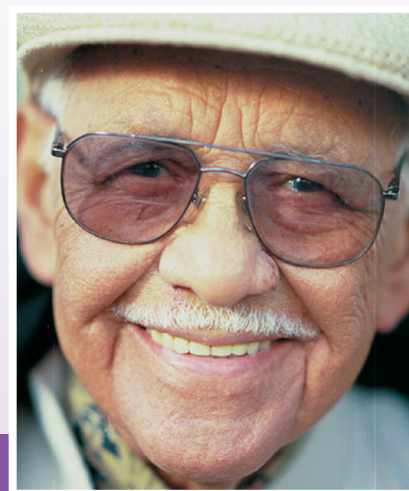
COMMUNITY INDICATORS

- The 65+ population in our region is projected to more than double and the 85+ population in our region and is projected to more than quadruple from 2000 to 2040.
- One out of every four older adults in our region lives in a household at or near the poverty level (that's more than 33,000 older adults), which threatens access to services and resources.
- In our community, more than 35,000 (29%) older adults live alone, placing them at risk of becoming isolated.
- Isolation increases risk of chronic conditions and can significantly shorten a person's lifespan. In fact, social isolation presents a greater health risk than smoking 15 cigarettes daily and a negative health consequence equal to obesity.

COMMUNITY IMPACT FUND

Your choice to give to the Community Impact Fund contributed to an investment of \$902,000 in 17 programs providing services to older adults, people with disabilities, and family caregivers.

- Access to health services
- Adult day services
- Healthy eating
- Home adaptations
- Sexual assault support services
- Personal care
- Respite care
- Systems-level planning and coordination for healthy aging and lifelong wellness



IMPACT 2020 TARGET

**ELIMINATE SOCIAL ISOLATION FOR 25,000 AT-RISK
OLDER ADULTS OR PEOPLE WITH DISABILITIES**

For more information, visit WWW.YOURUNITEDWAY.ORG



United Way of Greater
Richmond & Petersburg

FOCUS AREA:

HEALTH

IMPROVING LIVES AND ELIMINATING ISOLATION



2015-2016 COMMUNITY IMPACT FUND PROGRAM GRANTS

| AGENCY | PROGRAM | TOTAL GRANT \$ |
|--------------------------------------|--|-------------------------|
| A Grace Place Adult Care Center | Adult Day Care | \$90,000 |
| Access Now | Patient Care Coordination | \$25,000 |
| Better Housing Coalition | Senior Health and Wellness Initiative | \$50,000 |
| Circle Center Adult Day Services | Adult Day Care | \$60,000 |
| Cross-Over Ministry | Chronic Disease Management Program | \$25,000 |
| Daily Planet | Access, Collaboration, and Coordination of Integrated Care | \$50,000 |
| Family Lifeline | Programming for Older Adults, People with Disabilities, and their Caregivers | \$125,000 |
| Fan Free Clinic | Integrated Care for Older Adults | \$50,000 |
| FeedMore, Inc. | Meals on Wheels | \$75,000 |
| Goochland Free Clinic | Access to Health Care | \$25,000 |
| Greater Richmond Arc | Camp Baker | \$25,000 |
| Hanover Arc | Community Integration and Independence | \$25,000 |
| Jewish Family Services | Personal Care | \$75,000 |
| project: HOMES | Renew Crew | \$35,000 |
| Senior Connections | Greater Richmond Age Wave Readiness Initiative | \$62,000 |
| South Richmond Adult Day Care Center | Adult Day Care | \$30,000 |
| YWCA of Richmond | Support for Victims of Sexual Assault | \$75,000 |
| | | TOTAL: \$902,000 |

INVESTMENT PROSPECTUS INCOME



HELPING MORE HOUSEHOLDS ACHIEVE AND MAINTAIN FINANCIAL STABILITY

UNITED WAY

We want individuals and families to secure the resources, skills, and opportunities to obtain and maintain financial stability. How do we get there? We invest in programs that promote household-sustaining income/employment, provide stable, affordable housing, and bolster savings, assets and financial literacy.

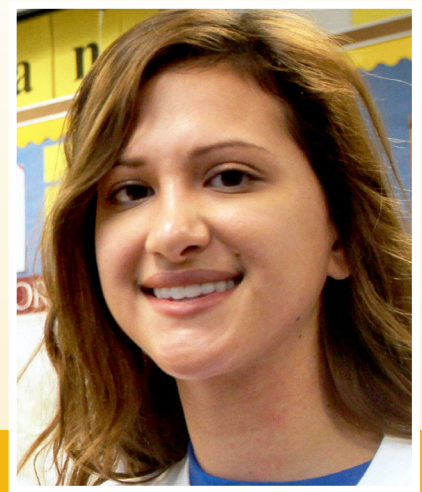
COMMUNITY INDICATORS

- From 2000 to 2013, the percent of Richmond-area residents living in poverty rose from 8.5% to 12.8%.
- 30% of Virginia households do not have adequate savings or assets to cope with an emergency or plan for the future.
- As of 2010, median household net worth in the U.S. was over \$110,000 for white households, but less than \$5,000 for African-American households.
- Homeward's January 2015 Point-in-Time count found 730 homeless adults and 88 homeless children in our region.

COMMUNITY IMPACT FUND

Your choice to give to the Community Impact Fund contributed to an investment of \$972,000 in 14 programs providing services to older adults, people with disabilities, and family caregivers.

- Access to work supports
- Credit counseling
- Debt management
- Emergency shelter
- Homelessness prevention
- Job-finding assistance
- Permanent supportive housing
- Rapid re-housing
- Rent and utility assistance



IMPACT 2020 TARGET

HELP 25,000 GREATER RICHMOND AND PETERSBURG-AREA HOUSEHOLDS ACHIEVE GREATER FINANCIAL STABILITY



United Way of Greater
Richmond & Petersburg

For more information, visit WWW.YOURUNITEDWAY.ORG

FOCUS AREA:

INCOME



HELPING MORE HOUSEHOLDS ACHIEVE AND MAINTAIN FINANCIAL STABILITY

2015-2016 COMMUNITY IMPACT FUND PROGRAM GRANTS

| AGENCY | PROGRAM | TOTAL GRANT \$ |
|--|--|-------------------------|
| CARITAS | Family Focus | \$25,000 |
| | Single Adult Program | \$50,000 |
| Commonwealth Catholic Charities | Homeless Point of Entry | \$80,000 |
| Hanover Domestic Violence Task Force | Hanover Safe Place | \$85,000 |
| Housing Families First | Building Neighbors | \$75,000 |
| HomeAgain | Espigh Family Shelter | \$50,000 |
| Homeward | Utilizing Data to Facilitate Systems Change in Homeless Services | \$35,000 |
| Local Initiatives Support Corporation (LISC) | *Petersburg Financial Opportunity Center | \$45,000 |
| Offender Aid and Restoration (OAR) | START! Reentry | \$111,000 |
| Progressive Adult Rehabilitation Center (PARC) | *Supported Employment | \$25,000 |
| St. Joseph's Villa | Housing Services for Unaccompanied Homeless Youth | \$76,000 |
| Salvation Army, Central Virginia Area Command | Emergency Homeless Shelter | \$65,000 |
| Virginia Supportive Housing | Permanent Supportive Housing | \$100,000 |
| YWCA of Richmond | Domestic Violence Shelter | \$150,000 |
| | | TOTAL: \$972,000 |