

COMMUNITY
IMPACT FUND

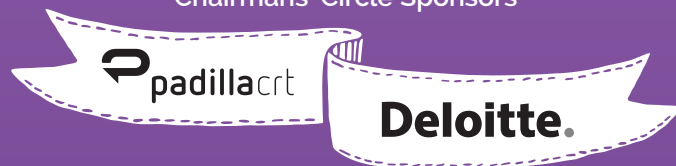


United Way of Greater
Richmond & Petersburg

United Way of Greater Richmond & Petersburg exists to mobilize people, multiply investments, and maximize opportunities so people learn more, earn more, and lead safe and healthy lives.

Find out how YOU can give back at YourUnitedWay.org

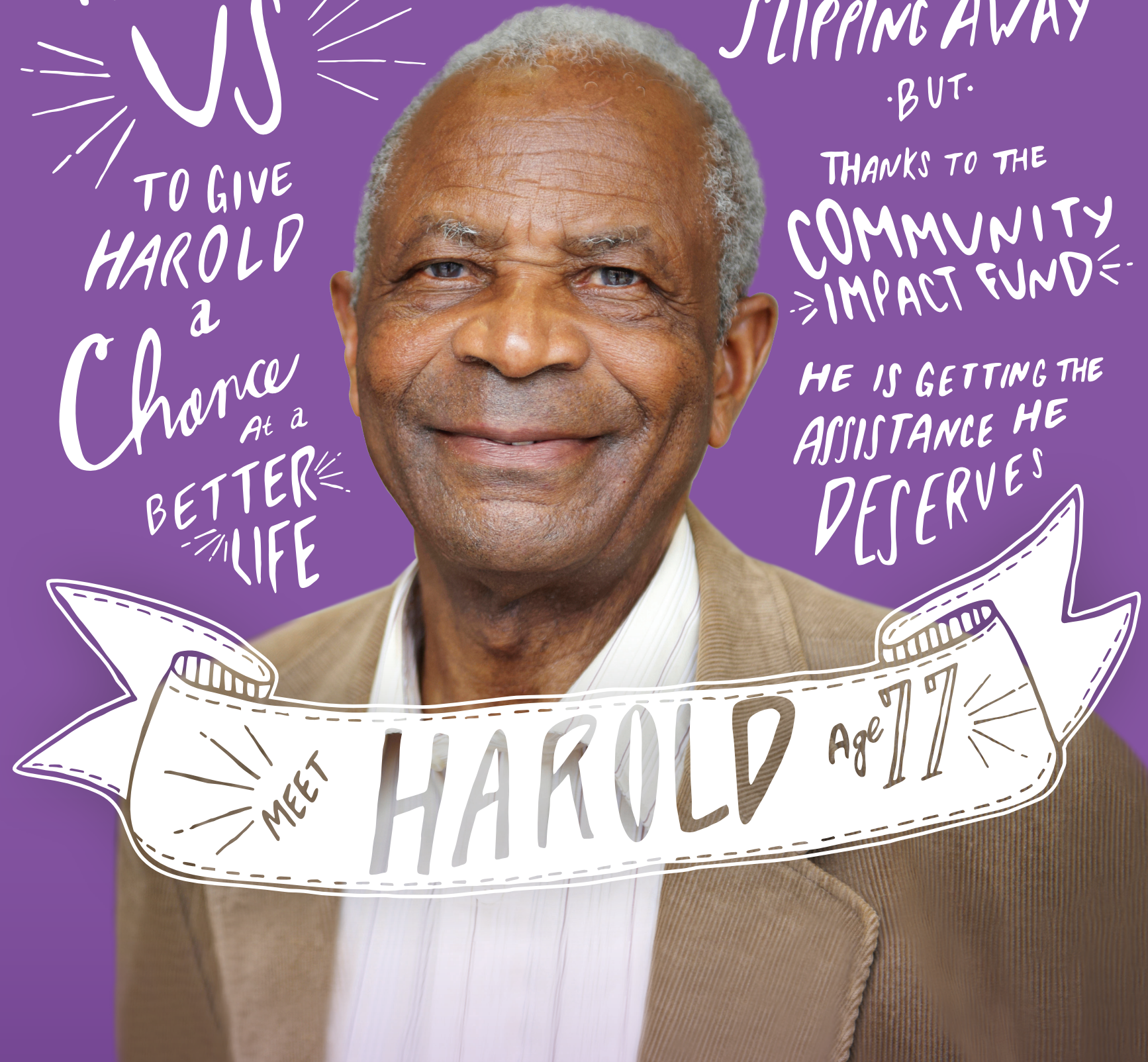
Chairmans' Circle Sponsors



It's Up to
US
TO GIVE
HAROLD
a
Chance
At a
BETTER
LIFE

HAROLD FELT
HIS LIFE
SLIPPING AWAY
BUT.

THANKS TO THE
COMMUNITY
IMPACT FUND
HE IS GETTING THE
ASSISTANCE HE
DESERVES



MEET HAROLD Age 77

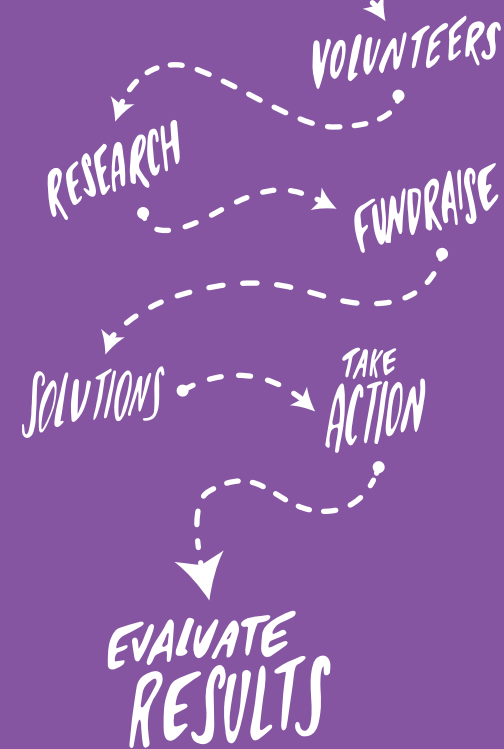
HOW WE ARE HELPING HAROLD

Harold, 77, worked his whole life in construction. He helped build schools and churches, shops and bridges. He built his own home. A year ago his wife passed away, and soon after that, Harold took a dangerous fall. He felt his will to live slipping away. A friend at church, who volunteers for United Way, suggested that Harold have his meals delivered. The volunteer who brings him a nutritious lunch every day told Harold how he could get help building a ramp for his wheelchair. Recently, Harold learned about a different

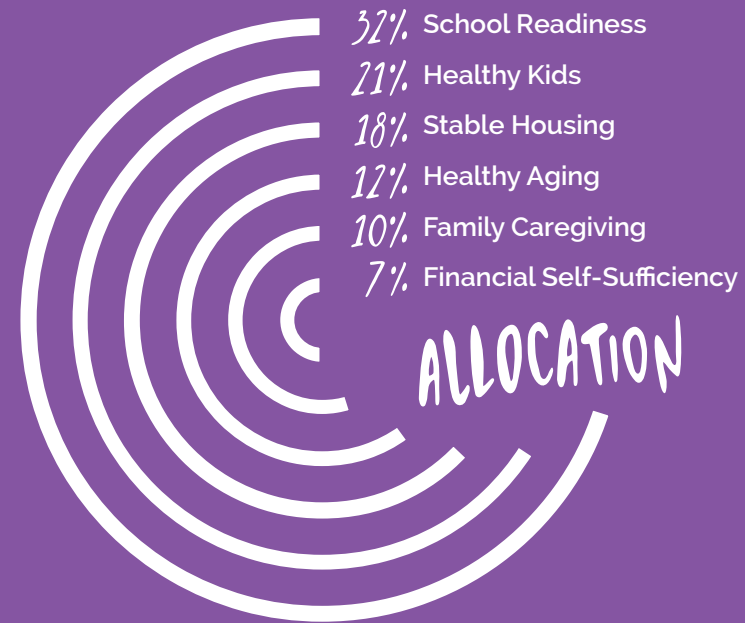
program that makes friendship visits, so now Harold is even fishing again.

Thanks to the Community Impact Fund, United Way is creating positive outcomes like Harold's for thousands of people across our region. Because one program can't address all the issues a person faces. That's the power of the Community Impact Fund: the best choice for a better life.

OUR DUE DILIGENCE



WHY DONATE TO THE COMMUNITY IMPACT FUND



Find out how YOU
can give back at
YourUnitedWay.org

