

FUNDED PARTNERS 2022-2023

\$2.475 MILLION | 72 PROGRAMS | 54 PARTNER AGENCIES

BORN HEALTHY: FOOD, SAFETY & HOUSING

- **FAMILY LIFELINE**
Early Childhood Development Initiative
- **THRIVE VIRGINIA**
Charles City / New Kent Healthy Families

BASIC NEEDS

- **ACCESS NOW**
Specialty Medical Care for the Uninsured
- **BOYS & GIRLS CLUB OF METRO RICHMOND**
Thriving Families: BGCMR Family Stability Program
- **CARITAS**
Emergency Shelter & Case Management
- **CHESTERFIELD COLONIAL HEIGHTS ALLIANCE FOR SOCIAL MINISTRY (CCHASM)**
Emergency Food Assistance for Families and Individuals in Crisis
- **CHILDREN'S HOME SOCIETY OF VIRGINIA**
Partnership for Adoptions
- **CHILDSAVERS**
Trauma-Informed Mental Health Services to Support Children's Resiliency
- **COMMONWEALTH CATHOLIC CHARITIES**
Housing Resource Center
- **COMMUNITIES IN SCHOOLS (PETERSBURG)**
Integrated Student Support Services for Underserved Students
- **CROSS-OVER HEALTHCARE MINISTRY**
Chronic Disease Management
Pediatrics Program
- **HOMeward**
Utilizing Data to Facilitate Systems Change
Coordinated Entry to Homeless Services
- **HOUSING FAMILIES FIRST**
Building Neighbors
Hilliard House Emergency Shelter
- **PARTNERSHIP FOR HOUSING AFFORDABILITY**
Richmond Housing Resource Line
- **REAL LIFE**
REAL Houses: Providing Recovery and Transitional Housing
- **ST. JOSEPH'S VILLA**
Mental Health Services
Flagler Housing / Homeless Services Petersburg Youth
- **THE SALVATION ARMY**
Emergency Homeless Shelter

BASIC NEEDS CONTINUED...

- **VIRGINIA HOME FOR BOYS & GIRLS**
Pride Place at VHBG
- **VIRGINIA SUPPORTIVE HOUSING**
Supportive Services for Formerly Homeless Individuals
- **YWCA OF RICHMOND**
Crisis Response Services

KINDERGARTEN READINESS

- **FRIENDS ASSOCIATION FOR CHILDREN**
Preschool
- **GREATER RICHMOND SCAN**
Circle Preschool Program
Family Support Program
- **SACRED HEART CENTER**
Family Literacy Project
- **SOAR365 (FORMERLY GREATER RICHMOND ARC)**
Pediatric Therapy
- **YWCA OF RICHMOND**
The Sprout School

THIRD GRADE READING

- **COMMUNITIES IN SCHOOLS (RICHMOND)**
Elementary Schools
- **THE LITERACY LAB**
Literacy Tutoring
- **YMCA OF GREATER RICHMOND**
Out-of-School Time - Greater Richmond

MIDDLE SCHOOL ENGAGEMENT

- **ART 180**
Community-Based Programs
- **BIG BROTHERS BIG SISTERS**
Community-Based Mentoring
- **BOYS TO MEN MENTORING NETWORK OF VIRGINIA**
Young Men Finding a Safe Space to Overcome Barriers
- **COMMUNITIES IN SCHOOLS (CHESTERFIELD)**
Fostering School Engagement and Success
- **HIGHER ACHIEVEMENT PROGRAM**
Closing the Middle School Opportunity Gap

MIDDLE SCHOOL ENGAGEMENT CONTINUED...

- **MENTOR VIRGINIA (FORMERLY MENTORING VIRGINIA PARTNERSHIP)**
Training and Quality Assurance
- **NEXTUP RVA**
Creating Access to Opportunity
- **PETER PAUL DEVELOPMENT CENTER**
Middle School Education
- **THE SALVATION ARMY**
Boys and Girls Club

HIGH SCHOOL GRADUATION

- **COMMUNITIES IN SCHOOLS (CHESTERFIELD)**
Promoting Increased Graduation Rates for Chesterfield Students

COLLEGE- OR CAREER-READINESS

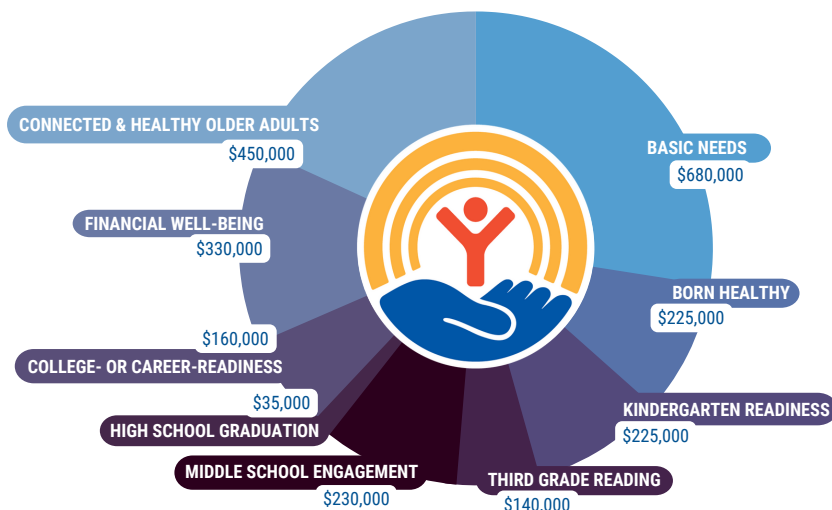
- **BOYS & GIRLS CLUB OF METRO RICHMOND**
Coordinated Support for Alumni / Opportunity Youth
Life Readiness Program for Teens
- **PARTNERSHIP FOR THE FUTURE**
Success in College and Beyond
- **SACRED HEART CENTER**
College and Career Bound Program
- **THE LITERACY LAB**
Leading Men Richmond

FINANCIAL WELL-BEING

- **HANOVER SAFE PLACE**
Financial Education
- **HUMANKIND**
Ways to Work
- **OPAR OF RICHMOND**
START! Reentry
- **PROGRESSIVE ADULT REHABILITATION CENTER (PARC)**
Supported Employment
- **THE READ CENTER**
Adult Literacy Programs
- **SOUTHSIDE COMMUNITY DEVELOPMENT HOUSING CORPORATION**
Housing Stabilization and Financial Empowerment
- **THRIVE VIRGINIA (FORMERLY QUIN RIVERS)**
Financial / Housing Counseling Program
- **VIRGINIA LISC**
Financial Opportunity Centers - Smart Savings
- **YWCA OF RICHMOND**
Building Resilience in Survivors of Domestic Violence & Sexual Assault

CONNECTED & HEALTHY OLDER ADULTS

- **BETTER HOUSING COALITION**
Senior Health & Wellness
- **CIRCLE CENTER ADULT DAY SERVICES**
Adult Day Care
- **DAILY PLANET HEALTH SERVICES**
Integrated Care
- **FAMILY LIFELINE**
In-Home Support Services
- **FEED MORE**
Meals on Wheels
- **GOOCHLAND CARES (FORMERLY FREE CLINIC & FAMILY SERVICES)**
Access to Health Care
- **HEALTH BRIGADE (FORMERLY FAN FREE CLINIC)**
Integrated Care for Older Adults
- **JEWISH FAMILY SERVICES**
Coordinated Care for Seniors
- **PROJECT:HOMES**
Renew Crew
- **SENIOR CONNECTIONS**
Care Transitions Intervention
- **SOAR365 (FORMERLY GREATER RICHMOND ARC)**
Adult Day and Adult Day Health Services
Respite Care for Adults with Disabilities
- **SOUTH RICHMOND ADULT DAY CARE**
Adult Day Services
- **VIRGINIA DENTAL ASSOCIATION**
Donated Dental Services
- **YMCA OF GREATER RICHMOND**
Aging Strong Program



\$2.475 MILLION | 72 PROGRAMS | 54 PARTNER AGENCIES

FOLLOW US!



United Way of Greater
Richmond & Petersburg

