

IMPACT REPORT

2023-2024



When people

UNITE

to take action, change
is possible.

United Way of Greater Richmond & Petersburg is a nonprofit organization that exists to mobilize the caring power of our local communities to help those in need and to create opportunities for all people to thrive.

For more than a century, United Way has connected people and resources to address the needs of our most vulnerable residents and drive solutions to root causes.



Dear Friends,

I am excited to share reflections and updates since joining United Way of Greater Richmond & Petersburg in June 2023. Over the past year, we've embarked on a journey of listening, learning, and transformation. Meeting with our valued community members, partners, and stakeholders has been a privilege, and your perspectives have reinforced the urgent need to address complex challenges like disparities in access to learning opportunities for our children, financial security, and access to essential services.



One of the most striking observations from my discussions was the resilience and strength of our community. Despite challenges, there is a profound sense of hope and a willingness to come together to make a difference. This spirit of collaboration will be the cornerstone of our efforts.

Our vision is clear: by 2030 United Way of Greater Richmond & Petersburg will be a driving force for innovation and impact. We are committed to fostering partnerships across sectors to tackle issues such as affordable housing, food security, and educational opportunities.

We have taken significant steps toward this vision. Our new strategic plan, launched on July 1, 2024, focuses on creating inclusive and sustainable solutions. We prioritize collaboration, impact, transparency, and accountability ensuring we are responsive to those we serve.

I am deeply grateful for your continued support and dedication. Together, we can build a community where everyone has the opportunity to thrive. Please reach out if you have questions or want to get more involved in your United Way.

I am inspired by the possibilities ahead and am confident that together, we can create a brighter future for our region.

Sincerely,

A handwritten signature in black ink that reads "Barbara C. Sipe". The signature is written in a cursive, flowing style.

Barbara Couto Sipe
President & CEO

2023-2024 BOARD OF DIRECTORS

United Way's Board of Directors is responsible for overseeing the business affairs of the organization, including strategic direction, resources, reputation, and stewardship of the organization's mission and assets.

Executive Committee

Lakshmi Algappan
Chair
EY LLP

Robert Cowgill
First Vice Chair
South State Bank

Mike Bruce
Second Vice Chair
2023 Campaign
Chair
Enterprise Mobility

Corynne Arnett
Immediate Past Chair
Dominion Energy

Peter Perkins
Treasurer
Anthem (Retired)

Members
Sherrie Armstrong
Community
Foundation
for a greater
Richmond

Cindy Buckler
Wells Fargo
Advisors (Retired)

Theresa Chambless
Publix Super
Markets

Josh Dare
The Hodges
Partnership

**Tammy Hornsby-
Fink**
Federal Reserve
Bank of Richmond

Sandra Onyiuke
Capital One

Dierdre Pearson
Community Impact
Committee Chair
Richmond
Behavioral
Health Authority

Ashanté Smith
Troutman Pepper

Kelly Till
Richmond Times-
Dispatch

Susan Triggs
Virginia Department
of Health (Retired)

Lynn White
Genworth Financial

Tony Witherspoon
Deloitte

2023-2024 IMPACT COMMITTEE MEMBERS

United Way's Community Impact Committee made up of diverse, local, volunteer, subject matter experts, tackles regional challenges through research, community input, and data. They meet monthly to assess community needs and advise United Way leadership on funding decisions for partner programs.

Dierdre Pearson
Chair
Richmond
Behavioral Health
Authority

Dalila Medrano
Vice Chair
Chesterfield County

Ron Alpern
Alpern Consulting

Frank Baskind
VCU School of Social
Work (Retired)

Cindy Buckler
UWGRP Board
Member
Wells Fargo
Advisors (Retired)

George Calvert
Atlantic Union
Bank Wealth
Management

Debbie Dugger
Chesterfield County

**Phyllis Grooms-
Gordon**
City of Richmond
Department of
Social Services

Dawn Hathaway
South State Bank

Cathy Howard
VCU School of
Psychology (Retired)

Bill Liepis
U.S. Army Colonel
(Retired)

Beth Ludden
Genworth Financial

Roxanne Marr-Shears
Virginia Department
of Behavioral Health
& Development
Services

Khari Patterson
Richmond City
Office of Community
Wealth Building

Peter Perkins
UWGRP Board
Member
Anthem (Retired)

Regina Pittman
Capital Bank

Robert Rolfe
Hunton Andrews
Kurth LLP

Cache Steinberg
Community
Volunteer

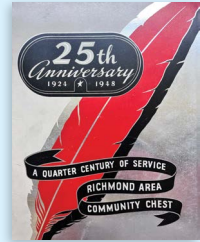
Susan Triggs
UWGRP Board
Member
VA Department of
Health (Retired)

On behalf of United Way's Board of Directors

Dear Friends,

Thank you for your valued support for our community. We envision the Greater Richmond and Petersburg region as a thriving area where everyone can live their best lives. This vision belongs to our entire community and embodies our collective success.

Our journey began in 1911 with a visionary meeting that ignited the creation of our local organization. In 1924, the 'Community Chest' campaign was launched in response to the evolving needs of our society. Throughout Richmond's history—shaped by urbanization, societal changes, and global challenges—we have continually adapted, leading efforts to address the increasingly complex needs of our community through fundraising, collaboration, and strategic investment.



Mirroring the stories of many in our community, our history is one of resilience. We recognize our obligation to contribute to its strength. Through coordination and persistence, we can achieve more together than we ever could alone. United Way is a movement empowering everyone to create lasting change. Our reach across 13 localities and over a million residents makes us a force for good.

We pledge to find the most effective ways to help our community thrive. From driving systemic change to meeting immediate needs, our commitment is unwavering. Together, we pursue meaningful impact, illuminating the pathway forward.

If you've been part of this journey, thank you for your support. If you're just joining us, welcome! We aim for this work to become 'THE' work of building a thriving region and eliminating barriers to opportunity. Together, we can bring this vision to life.



Sincerely,

Lakshmi Algappan
Board Chair





United Way Is A
Remarkable Force For

IMPACTING COMMUNITIES.

United Way of Greater Richmond & Petersburg has served our community for 100 years, working tirelessly to eliminate the constraints that prevent families from thriving. Through our collective power, we elevate early learning, build kindergarten readiness, energize middle school and high school students, and empower families through financial stability.

THANKS TO OUR DONORS, CORPORATE PARTNERS AND VOLUNTEERS' GENEROUS SUPPORT, IN FY24 WE PROUDLY INVESTED:

\$4.4 MILLION

INTO THE GREATER RICHMOND AND PETERSBURG REGION

SUPPORTING OUR COMMUNITY THROUGH GRANTS, DIRECT SERVICES, AND STRATEGIC INITIATIVES TO ENSURE ALL RESIDENTS HAVE THE OPPORTUNITY TO THRIVE.

\$2 MILLION

in grants awarded to

72

**COMMUNITY-LED
HUMAN SERVICE
PROVIDERS**

\$1.5 MILLION

in designated gifts
from individuals
transferred directly to

296

**QUALIFYING
NONPROFITS**

\$900,000

in separate funding from
foundations advanced
United Way-led initiatives
aimed at driving the
growth and prosperity of
the community.

THROUGH UNITED WAY INITIATIVES AND INVESTMENTS IN OUR PORTFOLIO OF FUNDED PARTNERS, UNITED WAY MOBILIZED THE COLLECTIVE POWER OF:

88

**COMMUNITY-
BASED
ORGANIZATIONS**

288

WORKPLACES

9,020

DONORS

HELPING 94,000 PEOPLE

ACCESS OPPORTUNITIES FOR UPWARD ECONOMIC MOBILITY IN THE FORM OF BASIC NEEDS, QUALITY LEARNING, GOOD HEALTH & WELLBEING, AND FINANCIAL SECURITY.

4,000

INDIVIDUALS

served by United Way initiatives such as Tax Assistance, WomenRise, RideUnited, and EveryDay Strong.

1,011

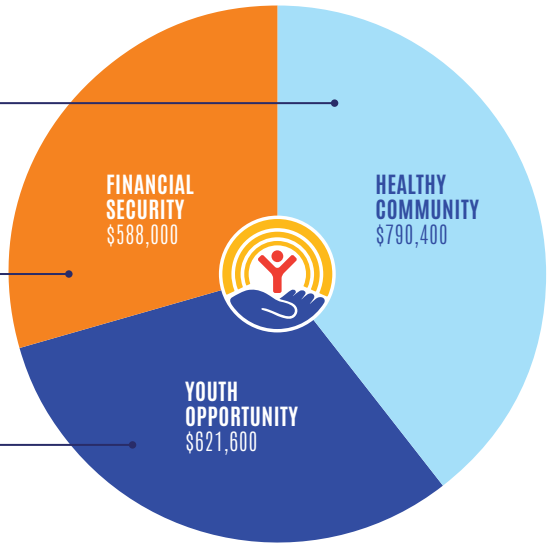
VOLUNTEERS

gave their time or talents with 2,545 volunteer hours impacting 161,205 community members with 80 completed volunteer opportunities.



INVESTING STRATEGICALLY

in three impact areas





In times of crisis, it is rare that needs are isolated to one service provider. No single nonprofit may be able to provide all the necessary support for a family or individual needs. **When you give to United Way of Greater Richmond & Petersburg, your donation is combined with others to create a united force, reaching multiple providers and maximizing our collective impact.**

United Way will always be a critical asset to community and conduit of real change. In order to make our greatest impact, we must adapt and evolve our model in order to meet the most pressing needs of our community. To do this, we reevaluated our framework and refined our funding strategy, aligning the ‘Steps to Success’ with three newly named impact areas:



HEALTHY COMMUNITY

Improving health and well-being for all



YOUTH OPPORTUNITY

Helping young people realize their full potential



FINANCIAL SECURITY

Creating a stronger financial future for every generation



HEALTHY COMMUNITY



Improving health and well-being for all

Access to healthcare is becoming increasingly limited, with rising emergency room visits for preventable conditions, a looming physician shortage, and gaps in care for the elderly and expectant mothers. Food insecurity, particularly in rural areas, is exacerbated by inadequate transportation and social isolation, especially among older adults.

Why it matters:

Expanding access to healthcare and addressing food insecurity are vital for creating healthier, more resilient communities. Ensuring that everyone, regardless of location or income, has access to essential health services leads to better outcomes and reduces long-term costs. By tackling these issues, we build communities where all individuals can thrive and contribute to a vibrant, equitable society.

HERE IS HOW YOUR SUPPORT HELPED
YOUR NEIGHBORS:

99%

OF CHILDREN IN HOME VISITING PROGRAMS
WERE REGULARLY SCREENED FOR
DEVELOPMENTAL MILESTONES AND IF NEEDED
REFERRED TO RELEVANT SERVICES.

2024 FUNDED PROGRAMS

ACCESS NOW

- Specialty Medical Care for the Uninsured

BETTER HOUSING COALITION

- Senior Coordinated Care

CHILD SAVERS

- Trauma-Informed Mental Health Services to Support Children's Resiliency

CIRCLE CENTER

- Adult Day Services

CROSS OVER HEALTHCARE MINISTRY

- Chronic Disease Management
- Pediatrics Program

DAILY PLANET

- Integrated Care

FAMILY LIFELINE

- Early Childhood Development Initiative
- In-home support services

FEEDMORE

- Meals on Wheels

GOOCHLAND CARES

- Access to Health Care

GREATER RICHMOND SCAN

- Family Support Program
- Circle Preschool Program

HEALTH BRIGADE

- Integrated Care for Older Adults

JEWISH FAMILY SERVICES

- In-Home Personal Care

PROJECT-HOMES

- Renew Crew

SENIOR CONNECTIONS

- Care Transitions

SOAR 365

(FORMERLY GREATER RICHMOND ARC)

- Adult Day and Adult Day Health Services
- Respite Care for Adults with Disabilities
- Pediatric Therapy

SOUTH RICHMOND ADULT DAY CARE

- Adult Day Care

ST. JOSEPH'S VILLA

- Mental Health Services

THRIVE VIRGINIA

(FORMERLY QUIN RIVERS)

- Charles City/New Kent Healthy Families

VIRGINIA DENTAL ASSOCIATION

- Donated Dental Services

YMCA OF GREATER RICHMOND

- Aging Strong Program

YWCA OF RICHMOND

- Crisis Response Services



EVERYDAY STRONG

EveryDay Strong, a United Way program, trains adults to support the mental health of children aged 8 to 18 using a research-based framework. Partnering with Greater Richmond SCAN, Petersburg City Public Schools, and over 30 others, the program offers free resources and training to build youth resilience. Since launching in Spring 2023, 1,387 people have been trained, and over a million reached through our public awareness campaign.



“I’ve personally benefited from programs funded by the United Way while growing up. That has given me firsthand knowledge of how impactful the United Way’s support can be for individuals, families and communities.” - **ASHANTE S.**



YOUTH OPPORTUNITY



Helping young people realize their full potential

Many low-income families lack access to affordable, reliable, high-quality childcare, leaving 40% of Virginia's Kindergarteners underprepared in key areas like literacy and math. Less than 30% of children from ALICE households are enrolled in preschool, and the high cost of childcare consumes up to 25% of their budgets. For older youth, chronic absenteeism, mental health challenges, and high dropout rates threaten their future success.

Why it matters:

Investing in early childhood education and supportive programs for youth is critical to helping them reach their full potential. Quality childcare and educational opportunities can close achievement gaps and set the foundation for future success, especially for children from underserved families. Supporting out-of-school programs during middle and high school can improve mental health, academic performance, and career readiness, ultimately leading to stable, successful lives.

HERE IS HOW YOUR SUPPORT HELPED YOUR NEIGHBORS:

79%

(5,903) MIDDLE SCHOOL STUDENTS IMPROVED IN ACADEMIC PERFORMANCE.

2024 FUNDED PROGRAMS

ART 180

- Community-Based Programs

BIG BROTHERS BIG SISTERS

- Community-based Mentoring

BOYS & GIRLS CLUBS OF METRO RICHMOND

- Life Readiness Program for Teens
- Coordinated Support for Alumni / Opportunity Youth

BOYS TO MEN MENTORING NETWORK OF VIRGINIA

- Young Men Finding a Safe Space to Overcome Barriers

CHILDREN'S HOME SOCIETY OF VIRGINIA

- Partnership for Adoptions

COMMUNITIES IN SCHOOLS OF CHESTERFIELD

- Fostering School Engagement and Success
- Promoting Increased Graduation Rates for Chesterfield Students

COMMUNITIES IN SCHOOLS OF PETERSBURG

- Integrated Student Support Services for Underserved Students

COMMUNITIES IN SCHOOLS OF RICHMOND

- Elementary Schools

FRIENDS ASSOCIATION FOR CHILDREN

- Preschool

HIGHER ACHIEVEMENT PROGRAM

- Closing the Middle School Opportunity Gap

MENTOR VIRGINIA (FORMERLY VIRGINIA MENTORING PARTNERSHIP)

- Training and Quality Assurance

NEXTUP RVA

- Creating Access to Opportunity

PARTNERSHIP FOR THE FUTURE

- Success in College and Beyond

PETER PAUL DEVELOPMENT CENTER

- Middle School Education

SACRED HEART CENTER

- College and Career Bound Program
- Family Literacy Project

THE LITERACY LAB

- Leading Men Richmond
- Literacy Tutoring

THE SALVATION ARMY

- Boys and Girls Club

YMCA OF GREATER RICHMOND

- Out-of-School Time – Greater Richmond

YWCA OF RICHMOND

- The Sprout School



KINDERGARTEN COUNTDOWN CAMP

(PROGRAM SUNSET 7/30/24) The Kindergarten Countdown Camp (KCC) pilot program successfully addresses the need for school readiness in rural communities. In 2023, 81% of students improved academic skills while at camp. In 2024, United Way transitioned the KCC administration to Powhatan and Dinwiddie Counties, providing technical support to ensure the program's sustainability. Thanks to United Way, donors, and school partners, the KCC now offers rising kindergarten students—without preschool experience—a free summer learning program taught by licensed teachers. Students receive breakfast, lunch, a new book each week, and school supplies, while gaining essential academic and social-emotional skills for a successful start in kindergarten.



LITERACY KITS

Early learning resources are vital for kindergarten readiness and reading proficiency by third grade. Volunteers create Literacy Kits with tools and information to support families. A Literacy Kit Leader is a group that donates at least 100 kits or \$1,500 to our efforts.



2,395

LITERACY KITS DISTRIBUTED
TO LOCAL STUDENTS

LITTLE FREE LIBRARIES

Little Free Libraries throughout the region offer free literary resources, encouraging children to read while giving families easy access to new and used books. Community members exchange books, and United Way volunteers ensure they are regularly restocked.



8

NEW LITTLE FREE
LIBRARIES INSTALLED



FINANCIAL SECURITY



Creating a stronger financial future for every generation

Financial insecurity affects 42% of the Richmond region's population, with ALICE (Asset Limited Income Constrained Employed) households struggling to afford basic necessities like housing, food, and healthcare. High eviction rates, food insecurity, and a severe shortage of affordable housing cause many residents to risk homelessness. These challenges weaken community resilience and social cohesion.

Why it matters:

Addressing financial instability is key to promoting economic mobility and community well-being. Providing access to affordable housing, essential resources, and financial services helps individuals and families build wealth, achieve stability, and contribute to a stronger, more equitable community. Supporting vulnerable populations fosters resilience and ensures that everyone has the opportunity to succeed.

HOME REPAIR, ADULT DAY SERVICES, AND HOME CARE PROGRAMS RESULTED IN SAVINGS OF

\$21,490,863

FOR FAMILY CAREGIVERS AND TAXPAYERS.

122

HOUSEHOLDS MOVED INTO PERMANENT HOUSING THROUGH CRISIS HOTLINE SUPPORT.

2024 FUNDED PROGRAMS

BOYS & GIRLS CLUBS OF METRO RICHMOND

- Thriving Families: BGCMR Family Stability Program

CARITAS

- Emergency Shelter and Case Management

CHESTERFIELD COLONIAL HEIGHTS ALLIANCE FOR SOCIAL MINISTRY (CCHASM)

- Emergency Food Assistance for Families and Individuals in Crisis

COMMONWEALTH CATHOLIC CHARITIES

- Housing Resource Center

HANOVER SAFE PLACE

- Financial Education

HOMeward

- Coordinated Entry to Homeless Services
- Utilizing Data to Facilitate Systems Change

HOUSING FAMILIES FIRST

- Hilliard House Emergency Shelter
- Building Neighbors

HUMANKIND (PBFS)

- Ways to Work

OAR OF RICHMOND

- START! Reentry

PARTNERSHIP FOR HOUSING AFFORDABILITY

- Richmond Housing Resource Line

PROGRESSIVE ADULT REHABILITATION CENTER (PARC)

- Supported Employment

REAL LIFE

- REAL Houses: Providing Recovery and Transitional Housing

SOUTHSIDE COMMUNITY DEVELOPMENT HOUSING CORPORATION

- Latino Community Engagement

SUPPORTWORKS HOUSING

- Supportive Services for Formerly Homeless Individuals

ST. JOSEPH'S VILLA

- Flagler Housing / Homeless Services Petersburg Youth

THE READ CENTER

- Adult Literacy Programs

THE SALVATION ARMY

- Emergency Homeless Shelter

THRIVE VIRGINIA (FORMERLY QUIN RIVERS)

- Financial / Housing Counseling Program

VIRGINIA HOME FOR BOYS & GIRLS

- Pride Place at VHBG

VIRGINIA LISC

- Financial Opportunity Centers – Smart Savings

YWCA RICHMOND

- Building Resilience in Survivors of Domestic Violence and Sexual Assault



WOMENRISE

United Way's WomenRise program offers childcare scholarships to single moms pursuing college degrees or certificates, helping them with both childcare and career advancement. Women United members fundraise, select scholarship recipients, and provide ongoing support throughout the year.

19

SINGLE MOMS RECEIVED
CHILDCARE SCHOLARSHIPS DURING
THE 2023-2024 SCHOOL YEAR.

84%

FIRST GENERATION
COLLEGE STUDENTS

14

WOMENRISE GRADUATES
SINCE THE PROGRAM STARTED

\$400,000

IN SCHOLARSHIP FUNDS SINCE
THE PROGRAM STARTED



EMPOWER SPONSOR:



BUSINESS CIRCLE
SPONSORS:

- Dominion Service Company
- Latched Mama
- Magnify
- Managed Benefits
- Quadrant Family Services
- Rich's Stitches, Inc.
- Richmond Memorial Health Foundation
- St. Mary's Catholic Church

MISSION SPONSORS:



Richmond Times-Dispatch





UNITED FOR ALICE



United for ALICE is a driver of innovation, research, and action to improve life across the country for ALICE (Asset Limited, Income Constrained, Employed) and for all. Through the development of the ALICE measurements, a comprehensive, unbiased picture of financial hardship has emerged. Harnessing this data and research on the mismatch between low-paying jobs and the cost of survival, ALICE partners convene, advocate, and collaborate on solutions that promote financial stability at local, state, and national levels. United for ALICE raises awareness about a huge but hidden segment of our community that is struggling to afford basic necessities. The success of a community is directly related to the financial stability of its members. United Way staff convene lunch and learn workshops for interested groups.

TAX ASSISTANCE PROGRAM

United Way's Tax Assistance Program provides free tax prep for families and individuals earning \$64,000 or less. With 15 sites in the Greater Richmond and Petersburg region, 189 volunteers eased tax season stress and brought financial relief to those in need.

2024 TAX SEASON RESULTS:



3,262

ACCEPTED RETURNS

\$3,633,630

IN TAX REFUNDS

\$937,873

IN EARNED INCOME
TAX CREDIT REFUNDS

\$815,500

SAVED IN TAX
PREPARATION FEES



2024 Tax Assistance Volunteer Celebration



DOMINION ENERGYSHARE

Since 1982, Dominion EnergyShare has helped more than 926,000 individuals and families experiencing financial hardship with the cost of heating and cooling their homes. For 42 years, Dominion Energy has partnered with United Way of Greater Richmond & Petersburg to provide financial management of the program.

PROGRAM YEAR 6/23-5/24



13,800

INDIVIDUALS AND
FAMILIES SERVED

1,300

MILITARY VETERANS
FAMILIES SERVED

1,100

INDIVIDUALS LIVING WITH
DISABILITIES FAMILIES SERVED

1,200

HOMES WEATHERIZED

RIDE UNITED

Ride United, a partnership with Lyft, provides on-demand rides for those without transportation. Launched in June 2021 to help with COVID-19 vaccination appointments, our Ride United program now supports various needs including education, employment, and healthcare. In collaboration with HumanKind, Senior Connections, and the Community College Workforce Alliance, United Way addresses transportation gaps for essential tasks. Since 2021, 1,612 rides have been completed, with 454 in fiscal year 2024.

"Ride United has helped Family Lifeline support older adults living off bus lines by providing essential rides. It also offers added support to our care providers, enhancing our ability to serve both staff and seniors in their homes."

- ANNA HARDIN,
SENIOR VP OF PROGRAMS,
FAMILY LIFELINE

DRIVING COMMUNITY ENGAGEMENT

Core to United Way is the principle that we can solve more problems working together than individually.

United Way leads regional efforts by uniting partners to tackle tough challenges. We administer the U.S. Emergency Food and Shelter Program that supports nonprofits across the region with funding to provide food, shelter, and utility assistance to more clients. Additionally, we serve as a member on the Workforce Coalition RVA, alongside Chamber RVA, Community College Workforce Alliance, Capital Region Workforce Partnership, the Office for Community Wealth Building and many others. This cross-sector, collaborative initiative connects job seekers with living wage jobs and increases the pipeline of jobseekers equipped with the necessary skills to be successful in high-demand industries like healthcare, manufacturing, and IT.



RECOGNIZING THE HEROES AMONG US



Our Steps to Success event sponsors made it possible to give special recognition to individuals and corporate partners who are leading the way in making our community a better place. Thank you to these inspiring award winners and to our sponsors for their support

PRESENTING SPONSOR



GOLD SPONSOR



SILVER SPONSORS





CORPORATE PARTNER OF THE YEAR - PUBLIX SUPER MARKETS



COMMUNITY CHAMPION
MIKAYLA HALES
- PITNEY BOWES

ADT AWARD
JONATHAN AND
JENNIFER LEON

LEADERSHIP
CHAMPION
KAREN WHELEN

COMMUNITY IMPACT
VOLUNTEERISM
MIKI ANNAMANTHADOO

STEPS TO SUCCESS AWARD - WORKFORCE COALITION RVA



CELEBRATING WORKPLACE PARTNERS

For 100 years, United Way has mobilized individuals and businesses to become active, caring members of the community. Through our workplace engagement, we make philanthropy and civic involvement accessible to all employees, connecting resources toward effective solutions. In partnership with 288 workplaces, United Way of Greater Richmond & Petersburg received support through corporate gifts, grants, sponsorships, and employee campaigns. Thank you to our corporate and community partners for your generosity that makes this work possible.

TOP 25 WORKPLACE PARTNERS

	1				
2		3		4	
5		6		7	
8		9		10	
11		12		13	
14		15		16	
17		18		19	
20		21		22	
23		24		25	

AAA Mid-Atlantic
Abbott Laboratories
Access Now
Air Products & Chemicals, Inc.
AKA Rho Eta Omega Chapter
Allen, Allen, Allen & Allen
Allied Solutions
Altria
Amazon
Ameriprise Financial
Ameritas
Aqua Virginia
Ashby
AT&T
Athene Annuity & Life Assurance Company
Atlantic Union Bank
Automatic Data Processing
Avient
Bank of America
Benco Dental Supply Company
Berkshire Hathaway Energy Foundation
Big Brothers & Big Sisters Services
Bissell, Inc.
BMO Harris Bank
Bremo Pharmacy
Brenco Inc - Amsted Rail
Brown Advisory
Burns & McDonnell Engineering
Byrd Creek Farm
Carmax
Carrell Blanton Ferris & Associates PLC
Caterpillar
CFC - Combined Federal Campaign
ChamberRVA
Chesterfield County Government
Children's Home Society of Virginia
ChildSavers
CIGNA Healthcare
Circle Center Adult Day Services
Citizens Bank
Colonial Group Inc.
Comcast NBCUniversal
Commonwealth Catholic Charities

Commscope Technologies
Communities In Schools of Petersburg
Communities In Schools of Richmond
ConAgra Foods
Corman Kokosing Construction Company
Corteva
Cozen O'Connor
Cross Sales & Engineering Co.
CrossOver Healthcare Ministry
CRST International Headquarters
Crystal Ice Company, Inc.
Cummins Power Generation
CVC - Combined Virginia Campaign
Daily Planet Health Services
Davenport & Co.
Delta Air Lines
Dillard's
Dominion Service Company
DTE Energy
EAB
Eaton Corporation
Edwards Lifesciences
EFH Site - Hopewell Plant
Eli Lilly and Company
Energy Systems Group
Erie Insurance Group
Evonik Corporation
Exact Sciences Corporation
Exelon CommEd
EY
F&G Annuities & Life Inc.
Farm Bureau Bank
FedEx
Feed More
Fidelity National Financial, Inc.
Fifth Third Bank
Fire Protection Equipment Company
First Financial Bank
First National Bank
FORVIS
FRIENDS Association for Children
Fulton Bank
Gannett Fleming Inc.

"We are grateful to these employers who recognize the importance of a work-place culture that values community involvement. United Way could not do what they do without the community believing in our mission. We're transforming lives together!"

**- MIKE BRUCE, VICE PRESIDENT, AND GENERAL MANAGER FOR ENTERPRISE MOBILITY,
2023 UNITED WAY CAMPAIGN CHAIR, AND MEMBER OF UNITED WAY BOARD OF DIRECTORS**

WORKPLACE PARTNERS CONTINUED

General Dynamics
General Electric
Gentry Locke Attorneys
Gilbane Building Company
Grange Mutual Casualty Company
Graphic Packaging Corp.
Greater Richmond SCAN
Gresham Smith & Partners
Hallmark
Hanbury, Evans, Wright Vlattas & Company
Hanover County Government
Hanover Insurance Companies
Hanover Safe Place
Harris Williams
HCA Healthcare
HDR, Inc.
Health Brigade
Hellenic Woman's Club
Hoffman & Hoffman
Homeward
Hoover & Strong Inc.
Housing Families First
Huntington National Bank
Hydrite Chemical
IBM Corporation
IdeaWeavers
International Paper Corporation
ITG Brands
ITW
JCPenney
Jewish Family Services
Johnson Controls, Inc.
Johnson Mirmiran & Thompson
Kahler Slater
Kaufman & Canoles P.C.
Keiter
Kellanova
Kimberly-Clark
Kingland
Kings Dominion
KPMG
Kroger Stores
LL.Bean - Short Pump Town Center
L3 Harris Technologies, Inc.
Labella Associates
Laboratory Corporation of America
Last Minute Meetings
Latched Mama
Lutron Shading Solutions
M&T Bank
Macy's
Magnify
Managed Benefits, Inc.
Manpower
Mark Turner Construction
Markel
Marsh & McLennan
Marsh USA, Inc.
McGuireWoods LLP
Medtronic Emergency Response Systems
MENTOR Virginia
Mercer
Miller Electric Company
Molina Complete Care
Mount Level Baptist Church
Mount Olive Baptist Church
Mutual of America
Nationwide Mutual Insurance Company
Navy Federal Credit Union
Nelson Mullins Riley & Scarborough LLP
Networking Technologies + Support, Inc.
New Community School Foundation
New Covenant Church of Brethren
New Kent County Public Schools
Norfolk Southern Railway Company
Foundation
Northwestern Mutual Financial Network
OAR of Richmond
ODEC
Okta
OneAmerica Financial Partners, Inc.
O'Reilly Auto Parts
Owens & Minor
Padilla
Paychex
Peoples Bank
Petersburg City Public Schools
PetSmart
Pitney Bowes Inc.
PNC Bank
Polychrome Collective LLC
PRA Group
Principal Financial Group
Progressive Adult Rehabilitation Center, Inc.
project:HOMES
Prudential Insurance Company
Quadrant Family Services
Quinn Evans Architects
Randolph Macon College
Raymond James
RBC Wealth Management
Reed Smith LLP
Reliance Steel & Aluminum
Richmond Behavioral Health Authority

Richmond Memorial Health Foundation
Richmond Times Dispatch
Ricoh
Rockwell Automation
Royal Cup, Inc.
RTI International
Ryder Truck Rental, Inc.
Sacred Heart Center, Inc.
Saint Catherine's School
Salesforce
Senior Connections
Sentry Insurance
SOAR365
South State Bank
Southern States Cooperative
St. Joseph's Villa
St. Mary's Catholic Church
Standard Insurance Company
Sun Life Financial
SWBC
Swedish Match North America
Target
Taylor's Do It Center
TD Bank Corporation
The Bell Company LLC
The Hershey Company
The Hodges Partnership
The Monument Group
The Monument Sports Group
The Salvation Army
The Tax Complex, LC
Thrive Virginia
TJX Companies, Inc.
T-Mobile
Toast.org

Total Quality Logistics, LLC
Transamerica Agency Network
Travelers Insurance
Troutman Pepper
Trustmark
TSYS Global Payments
Turner Industries Group
U.S. Bank
Universal Corporation
UPMC
Utica National Insurance Group
Vamac, Inc.
Veolia
Verizon
Virginia Bankers Association
Virginia Credit Union
Virginia Supportive Housing
Vistra Corp.
Vulcan Materials Company
W. M. Jordan Company
Waco, Inc.
Wagman
WalMart/Sam's
Warren Whitney
Webster Bank
WestRock Company
Whiteford, Taylor & Preston
Whitley/Service Roofing & Sheet Metal Co.
Wilsonart
WRIC TV 8
WTVR CBS 6
YMCA of Greater Richmond



CULTIVATING A GIVING SPIRIT

United Way recognizes the following generous donors whose investments power our work in the community.

ALEXIS DE TOCQUEVILLE SOCIETY (>\$10,000)

United Way's Alexis de Tocqueville Society is an elite group of local leaders dedicated to creating positive change and fueling high-impact work in the Greater Richmond and Petersburg region for years to come.

LA SOCIÉTÉ NATIONALE:

\$100,000-\$249,999

The Lantana Foundation

ORDRE DE FRATERNITÉ:

\$75,000-\$99,999

Herndon Foundation

Nancy & Bruce Gottwald, Sr.

ORDRE D'ÉGALITÉ:

\$50,000-\$74,999

Thomas E. & Ann Parker Gottwald

ORDRE DE LIBERTÉ:

\$25,000-\$49,999

Martin J. Barrington

Mary & Willis Blackwood

The R.E.B. Foundation

James M. Frye Endowment Fund II

Mr. & Mrs. Thomas F. Garner, Jr.

Dr. & Mrs. William V. Garner

Mr. & Mrs. William H. Goodwin, Jr.

Constance & Linwood Lacy

Anthony F. & Susan M. Markel Fund

Mr. & Mrs. Stedman Oakey

Barbara B. & James E. Ukrop Fund

Jayne & Bobby Ukrop

MEMBRES DE LA SOCIÉTÉ:

\$10,000-\$24,999

Brian & Amanda Aker

Sherrie L. & Gary L. Armstrong

Charitable Fund

John & Wendy Asbury

G. Robert & Cindy Aston

Lori & Edwen Belza

Laura Boland

Brockenbrough Family Fund

Mr. Frank E. Brown

Mike & Wendi Bruce

Ward & Cindy Buckler

Thomas & Nancy J. Chewing Family Fund

The Dodd Family

Mr. Colin S. Drozdowski

Mr. G.S. Fitz Hugh Jr. Charitable Gift Fund

Charles & May Fox

Yvonne & Charles Gold

Eugene & Barbara Grecheck

Brandon & Nancy Harrell

Mr. & Mrs. James A. Jacobs

Jonathan & Jennifer Leon

The Lewis Butler Foundation

Mr. & Mrs. William C. McAllister

Tom McInerney

Wallace B. & Tina B. Millner

Ellen Morrissette

The Morton Family Fund of the Community

Foundation for a greater Richmond

C.D.L. & M.T.B. Perkins Fund of the Comm

Foundation for a greater Richmond

Mr. & Mrs. Cotesworth Pinckney

Bob & Jan Reynolds

Robert E. Rigsby

Bob & Cindy Rolfe

Strother & Evie Scott

Buzzard/Snyder Family Foundation

Edward & Shannon Venable

Karen M.L. Whelan

LEADERSHIP CIRCLE (\$1,000 - \$9,999)

United Way's Leadership Circle provides the foundation for all of the work we do. Leadership Circle members go above and beyond to transform communities by supporting United Way.

VISIONARY: \$7,500-\$9,999

Corynne & Bob Arnett
Thomas Gottwald
Marty & Debbie Klein
Barbara & Ronnie Sipe
William & Elena Skrobacz

SUSTAINER: \$5,000-\$7,499

Amanda Ahern
Lakshmi Algappan
The Clovelly Corporation
Tom & Robyn Barkin
Ms. Anne E. Bomar
Bowles RVA Fund
Jerry Bryant
Karen & Bob Buesing
Rodney Dodl
Eddie Eddins
Tamera Hornsby-Fink
Scott Hudson
Darrell D. & Betty R. Martin
Owen & Melissa Matthews
Kathy & Paul Munson
Linda K. Pace
Marc Purintun & Van Baskins
Michael Quay
Kirby Rainer
Mr. Paul Edward Ruppert
Thomas E. Shumate
Brooks Smith
Stegmaier Family Fund
Dan Walker
Andrea White
Stephanie & Marshall
Wishnack Fund
Charles A. Zincke
Memorial Fund

INNOVATOR: \$2,500-\$4,999

Jason R. Abbott
Farhad Aghdami
Brian & Heather Anderson
Phillip Avart
Hylah Ballowe
Becky Bareford

Kevin & Elizabeth Barger
Mark Bell
Randall & Amy Blanchetti
Caroline Y. Brandt
T. & Andrea Brewer
Margaret & Al Broaduss
George E. Calvert, Jr.
Terressa Campbell Oten
Theresa & Michael Chambless
Elizabeth Liles Chester
Amy Christopher
Pat & Lynn Collins
Mr. & Mrs. Gerry Collins
Rob & Helen Comet
Jon Coon
Ms. Kate McKenna Craig
Brian Curtis
Josh Dare
Richard & Allyson Dickinson
Josh Epps
Mark A. Flatin
Chandra Frasier
Courtney C. Friedlein
Sara Geringer Demeria
Larry & Ellen Glaze
Nicholas & Renee Haltom
Deborah Hamblen
Ms. Julie Higgins
Shelton Horsley
George C. Howell, III
Catherine James
Laura Ellen Jones
Jean Jumet
Mr. & Mrs. Brian C. Junkmann
Tana Kaefer
Mr. Paul Liao
Anita & Tom Lisk
William Littreal
Christopher J. Lumpkin
Peter E. Mahoney
Mr. Patrick Martin
Latarnya Butts Mason
Andrew McAllister
Mr. Michael Anthony Mee
Molly Mickens

Larry M.
Sonya Mills-Harvey
Michael Nedzbal
Sarrah M. Nguyen
Angela & Michael Otto
Ms. Asya T. Pack
Oscar H. Parrish, Jr. & Sally A.
Parrish Family Foundation
Francis A. Pineno
Mr. Joel K. Pitts
David Reichert
William Riley
Mr. & Mrs. Hartwell H. Roper
Mr. & Mrs. Alfred M. Ross
Mary Rotert
Chris Sabin
Daniel & Anne Schlussler
Randy & Tara Sharrer
Ms. Corrine D. Smith
Strassner Family Giving Fund
Mr. & Mrs. Chris Szymonik
Pamela Baird Tatum
Charles G. Thalhimer and
Family Foundation
Morton G. & Nancy P.
Thalhimer Foundation
Keith & Kelly Till
Mr. Raymond E. Turner
Leah R. & Joseph C. Wehinger
Lisa White
Mary Lyndon Whitmore
The George E. Williams Fund
Ron & Dru Witt
Ms. Jennifer Wold
Mr. Douglas Young

CONNECTOR: \$1,000-\$2,499

Heidi W. Abbott
Gary Akers
Thomas A. Akridge
Jody Alexander
Ms. Tiffany Carole Alexander
Jessica Allison
Ben & Marie Allred
Constance E. Alston

Bridget Aman
Elamaran Anbalagan
Dee Anderson
Kwame Appiah-Yeboah
Aidan Apsley
Leslie Arcuri
Christy Armitage
Craig & Mindy Arnold
Jacquelin & Scott Aronson
Mr. Bruce S. Arrington
Travis Babcock
James Baber
Mr. Michael Bailey
Emily Baish
Carrie Baker
John & Michelle Baker
Brooks & Lisa Ballance
Bonnie C. Ballsrud
Christopher Bankowski
Ann Banning
Mark Barden
Steve Bareford
Harrison H. Barker
Sean & Danielle Barker
Amy Bartilotti
Shelby Bartilotti
John W. Bates, III
Stephen & Mary Ann Batsche
Mr. Robert Batta
Wyatt & Tenley Beazley
Coburn & Lindley Beck
Jim Beckner
Steve & Jeanne Becraft
Pam Belleman
Marty Benton
Mr. Jacob Bilthuis
Greg Bishop
Mr. Burise C. Bittle, Jr.
Mr. Eric Bivens
Nancy & Robert Blake
Nicole Blankenbeckler
Alex Bloom
L. Robert Bolling
Mr. & Mrs. Brad H. Booker
Nitin Bose
Alaina Bowen
Mark Bowler
Ashley Elaine Brady
Mr. & Mrs. Scott Brame
Ms. April D. Brickle
Steve Brinkley
Melissa Ansley Brooks

Turner Broughton
Diane Brown
Ms. Charron Y. Brown
Victoria Bruce
Kevin W. Bruny
Reginal Bryant
Janet & Hugh Buchanan
Matthew J. Buckley
Ann Buhl
Zack Bunce
Amanda A. Burke
Doulgas C. Burke
Alex Burnett
Barbara A. Burns
Mr. Jason Burt
Oletha S. Calhoun
Ms. Melissa A. Campbell
Steven Cancino
Ms. Valerie Cantrell
Peter Cardinali
Keith A. & Pam A. Carney
Mr. Michael Caro
Mr. Eric J. Carpenter
Mr. Timothy E. Carpenter
Gregory & Jodi Carr
Brandi Carraway
Clairmonte Carroll
Jana & David Carter
Ms. Karen K. Carter
Catherine H. Cary
Mr. Harvey Chambers
Sathyaraj Devaki
Chandrasekar
Yiddy Chaves
Matthew Cheek
Martin M. Chege
Mr. Benjamin K. Christensen
Marc Chumney
Brenda & Todd Clarke
William Clarke
Michael Cleary
Christopher Cleveland
Edward F. Cole, III
Peter Coleman
Karen Conrad
Anthony & Yvette Conte
Donna L. Copley
Mrs. Vickie I. Corley
Kristin Costello
Karen Cottrell
Robert & Julia Cowgill
Jeremy Cox

John Crabtree
Kevin J. Craig
Donald L. Creach &
Karen Raschke
Ms. Courtney Crespy
Ms. Michele Crespo
Timothy S. Criss
Angeline Crowder
Susanne & Beverley Crump
Cheryl Curbeam
Cutchins Family Fund
Mr. Stephen Dagley
Christine & Graham Daniels
Felicia B. Daniels
Arthur & Susan Davis
Glen Davis
Mr. Tommy Davis
Ms. Jacqueline Davis
Mrs. Tomako R. Deaner
Michael & Leslie DeBruyn
Dave DeGonia
Jeff Deibel
Steven Delaney
Christopher Delfs
Stephen P. Demm
Anna Derewenda
Ms. Michele Devore
Nino Dicosmo
Gliceria Digiacomo
Richard E. Dolan, III
Allison T. Domson
Corbin & Tonita Donaldson
Mary C. Downey
William Downing
Kirtlin W. Doyle
Grace Draper
Donald Dress
Adam & Mary Drimer
Robert DuBois
Aaron & Amy Dunn
Charles & Linda Duvall
Ms. Pamela A. Dvorak
John Easter
Sharon L. Ebert
Dorothy Oscarlyn Elder
Mr. Paul Elliott
Mr. & Mrs. Jamaal Ellison
Jack Enoch
Taylor Estep
J. Andrew Etheredg
Mark Everett
Heather Farber

Steven Farber & Ann Jewell
Lora L. Farley
Mr. William Holland Fenerty
Suzanne Fielden
Ms. Rita Diane Filek
Diana Floyd
Delores Flores
Beth Ford
Woody & Susan Fowler
Patrick G. Frago
Jonathan A. Frank
Ms. Cheryl C. Franzyszen
Savannah R. Frasure
Carl Frye
Mr. Scott C. Furman
Mr. James Fuson
Jennifer Galvin
Mr. James Conrad Garcia
Mr. Gregory G. Garland
Ms. Sheena T. Garner
Nicole Garrett
Mr. Charles Gerena
Mr. Jeffrey Gerlach
Mr. Ryan Gerwig
William A. Giddings
Richard B. Gilbert
Ms. Catherine Gioeli
Dr. & Mrs. Anthony Michael
Giordano
Mr. David Gitschlag
Britt & Susan Glisson
Elizabeth Fields Godwin
Paige & Philip Goodpasture
Family Fund
Mark & Brigid Goodwin
Allen & Louanna Goolsby
Mary Gordon
Emily K. Gosselin
Mr. Edward Parker Gottwald
Susan & Michael Gracik
Alexander C. Graham, Jr.
Carla H. Graham
Mr. & Mrs. Douglas S. Granger
Tony & Sylvia Green
Matthew W. Grey
Robert J. Grey, Jr.
P. Christopher Guedri
Elizabeth T. Guertin
Ms. Jennifer Guilbeau
Ms. Kimberly M. Gunderson
Sloan Gutowski
Mr. Matthew Haddad

Donna Hadley
Andrew Hall
Matthew S. Hall
Rob Hammel
Vanessa Hampton
Chad Harcum
Andrea J. Harlow
Stephen Hayes
Tom Hayes
Todd Haymore
Ronald Haynes
Ms. Cindy J. Heidel
Douglas M. Heuman &
Cassandra B. Wright Fund
Margaret Heyssel
Michael Hickman
Chip & Caren Hidingar
Daniel Hinchman, III
Ryan Hite
Ms. Kara L. Holmes
Kathleen Houghtaling
Catherine Howard &
Jeffrey Gallagher
Nicholas Howell
Emily L. Hoye
Ms. Melissa Hunt
Paul Hunter
Nicole Dunbar
Ms. Tiyani Hutchinson
Ghada Ijam
James Inman
Tracey Ivey
Richard Jackson
Jennifer P. Jacobson
Naomi Jaeger
Terrese Jagels
Liam B. Jamison
Oran & Becky Jamison
Thomas & Anne Jefferson
Matt & Betty Jenkins
Pamela M. Jenkins
Steve & Robin Jenkins
Tim Jenkins
Kirk Johnson
Matthew & Mary Johnson
Mr. Brian Johnson
Pete & Beth Johnson
Demarion Johnston
Ms. Vicki Jolena-Orthaus
Renee Jones
Richard W. Jones
Wade L. Jones

Michael D. Justin
Dr. Howard & Mary E. Kahn
Sudha Kalva
Joe Kaperick
Janie Kaplan
Revanth Reddy Kariveda
Mr. Donald Kaupp
Joseph C. & Mary Jo Kearfott
Kayla M. Kelly
Ms. Christine Kerkeslager
Lynn L. & Neil S. Kessler
Family Donor Advised Fund
Ms. Jennifer Kessler
Jeff Kesterson
Ms. Linda Kilgore
Monique K. Kincade
Mr. & Mrs. David L. King
Ms. Alena I. King
Mr. Mark J. Kington
Rajagopal Kitnasamy
Mrs. Niki Kittrell
Philip W. & Nathalie L. Klaus
Fund
Knutson Family
Christopher Kogut, M.D.
Edward Kramer
Mr. Kiran Krishnamurthy
James Labor
Greg & Malissa Ladd
The LaGanke Family
Mr. James Lambert
Paula Lange
Duane Lankford
Keith & Jackie Larkin
Mr. Gerald M. Larkin
Ms. Elizabeth Laws
Michael A. Lee
David LeFebvre &
Kasey Kolste
Karen & Pete Legato
Todd Leudesdorff
Mr. Jeffrey L. Levin
Illan Levy
Melanie G. Lewis
Peggy Lewis
Walter C. Lindsey
The Linhart Foundation
Mrs. Patti B. Lipes
Lori Little
Bill & Missy Loving
Mrs. Marilyn S. Loving
Ms. Leigh G. Lowery

Matthew Luttrell
Ms. Tonya Y. Hall & Mr.
Antoine L. Lynch, Sr.
Kim MacLeod
Ms. Tracy Maitland-Martin
James Brantley Mallory
Jason M. Manaras
Joan Marable
Ajay Reddy Maram
Channing & Blair Martin
Davis Martin
Jonathan P. Martin
Mr. John Martin
Patrick Martin
Chris Mason
James C. May
Derrick & Samantha McCabe
Ben & Kelley McCall
Ms. Naomi M. McCargo
Mr. Steven Terrell McCarther
David McClenney
Dennis H. Ott, Jr. &
Diane H. McDorman
D. McGonagle
David & Cindy McMaster
Mr. David Mehigan
Laura Meloy
Fred Meredith
Myrna D. Meredith
Danielle Meyer
Ms. Karen Wade Meyer
Andrea Migliazzo
David & Linda Miller
Gary Miller
Michelle Miller
Jarvis & Brittani Mitchum
Kristen Montalvo
Tamiko Moody
Cheryl & Scott Moore
Hudson Moore
Mr. & Mrs. Russell D. Moore
Mr. Matthew H. Moore
Susan Q. Moore
Sudheer Moparthy
Andrew Morey
Ms. Jennifer L. Morris
Kirk Morton
Douglas Murch
Mr. Christopher Ward Murphy
Aneesh Naavaal
Cristie D. Neller
Thomas Nettleton

Erika Noerenberg
Jerry W. Norris
Mr. John M. Oakey, III
Ms. Cynthia M. Odoms
Robyn & Matt O'Hora
Lisa Troutman Oliva
Rev. Bobby Oliver, Sr.
Ms. Linda I. Omoruyi
Sandra C. Onyiuke
Judith R. Oumedian
Ms. Rena D. Owens
Ms. Samantha Pardee
Mr. William L. Parker
Mrs. Wini C. Parker
Mary Lloyd & Randy Parks
Ms. Elizabeth Miller Parrish
Tom Pastorico
Christin Patel
Kiran Patil
Peyton R. Pavy
Mr. Eric Paynter
Manuel Payret
Ronna Pazdral
Ms. Dierdre H. Pearson
Tommy Pelfrey
Mr. Thomas Pelnik
Peter & Teresa Perkins
Brent Peterson
Ms. Betty L. Petree
Eric Pfeifer
Mr. & Mrs. Donald D. Phenegar
Chip & Marsha Phillips
Ms. Ashley Pingitore
Alexis Piinhard
Ms. Margaret C. Plantz
Paul & Shelia Pleasants
Ms. Jana M. Pollard
Malin/Pominski Family Fund
Carol Creeger Pope
Charitable Fund
LaTonja Powell
Rahul Raj
Murali Ramachandran
Ms. Charlotte A. Ramage
Manikandan Ramamurthy
Ms. LaTasha Rasberry
Mr. Curtis W. Reed
Mr. Matthew P. Reinhardt
Kimberly Reynolds
Sandy Reynolds
Ashley M. Ricard
Gail Ridgeway

Gregory L. & Nancy A. Ridler
Diana Frasier Rios
John Roberts
Ms. Quynh Nhu Nguyen
Roberts
Tim Robertson
Ms. Ronda S. Robinson
Coleen & Agustin Rodriguez
Francisco Rodriguez
Christopher Rogerson
David & Linda Rose
Mike Rose
Fred Rosen
Jay & Amy Rosencrance
Mr. Brian C. Rust
Leonardo Salinas
John Sappington
Paul Saunders, II
Bindy Savedoff
Jason Schemmel
Edward & Elizabeth Scher
Karen Schettino
Mr. Scott L. Schiltz
Vince Schuck
William Schwarzschild
Michelle Scott
Mrs. Stephanie Scott
Ms. Victoria Scott
W. Matthew Scott
Joe & Ellen Seguin
Ms. Laurie Shadders
Adam Shaia
Dr. & Mrs. Robert Shayne
Mr. Dylan A. Sheehan
Cannen Shell
Stephanie Shepard
Mr. & Mrs. Bruce E. Shepperson
David Shier, Jr.
Joshua Shrader
Fred Shuford
Vikram Sidhabathuni
The Richard M. Simon
Charitable Gift Fund
Mr. James N. Singletary
Sunil Sinha
Carter McKay Sipe
Curtis & Leslie Sisk
Ms. Mary Jo Sisson-Vaughan
Nadra A. Smith
Nathaniel Smith
Snead Family Foundation
Ms. Jennifer Snyder

Morten Sorenson
Quianta Spears
Brielle Mountcastle Stanley
Mrs. Ann Louise Stephens
Bart Stevens
Kelly Stewart
Louis Stewart
Jay Stodard
Mathias Stolarski &
Maria Lasaoosa
Matthew Stoss
Mike & Susie Stough
Ramanan Sundaram
Mrs. Florencetta D. Sutton
Constance Swaine
Jeffrey W. & Lyn L. Swallen
Snehalatha Swaminath
Jamie Swann
Ms. Shantea L. Swinson
Joe Tanzola
Ken & Michelle Tate
Pat & Erin Testa
Mr. Brian D. Theisen
Michele Thomas
Samantha Thompson
Michelle & Bill Thomson
Sherri Thorne
Mr. Robert Thornhill
Edward J. Tochterman

Ryan Trifari
Susan L. Triggs, PhD
Edward R. Turnbull
Ms. Shomari Twyman
Megan E. Tyson
Margaret Vadas
Mr. William Van Huss
Pieter & Stephanie Van Saun
Mr. Joseph M. Vancaster
Swaroop Veerabhadrapa
Faline Vega
Mrs. Jessica E. Vermont
Andrej Vlahcevic
Ms. Wendy Vocelka
Cheryl Vosburg
Ms. Sandra L. Wakefield
John & Anne Walker
Ms. A. Adele Walker-Blue
C. Dixon Wallace, Jr.
Gary & Sara Wallace
Elizabeth Ware
Scott & Vicki Warren
Frank Weber & Shana Weber
Weber Green Fund
Ms. Amy Weeks
Jennifer Wells
Adrienne P. Whitaker
Bruce T. Whitehurst
George Whitley

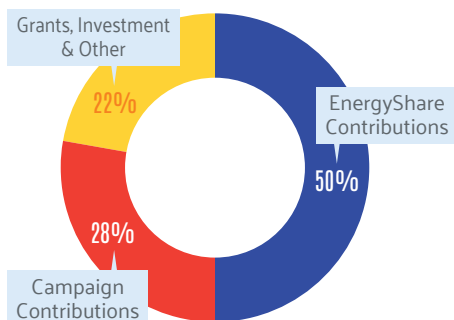
Ms. Deserae Whitus
Georgia & Daniel Williams, Jr.
Katina Williams
Keith Williams
Michael D. Williams
Richard L. & Deborah D.
Williams
Susan A. Williams
Brandon Williamson
Mr. Brian C. Wilson
Ms. Anne Wilson
Sonja Wilson
Chris Windmuller
Mr. Guy Winterbotham
Mr. Tony Witherspoon
Meghan Wlaz
Mr. George I. Wood, Jr.
Vincent A. Wood
Michael Woody
Desmond Wray, III
K.L. Wright
Mr. & Mrs. Wesley Wright, Jr.
Terry Wright
Julie Yoo
Barbara & J. David Young
Aaron L. Zandman

"I've been supporting United Way of Greater Richmond & Petersburg for 50 years. For the last 30, I've served on various boards and committees, mostly related to finance. I trust United Way because they know how to make a real difference. Over the years, I've seen many changes, and I feel wonderful about the organization's current direction. The leadership and dedication are stronger now than ever before. Reflecting on my long journey with United Way, I feel a deep sense of fulfillment. United Way will continue to thrive and positively impact our community, just as it has for the past fifty years. My vision is a community where people help each other, where no one lives in fear, and where everyone is looked after." - KAREN WHELAN

FINANCIAL OVERVIEW

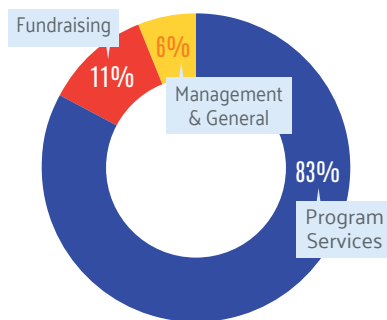
UNAUDITED RESULTS

SUPPORT + REVENUE:



TOTAL: \$12,585,152

EXPENSE:



TOTAL: \$12,037,214

STATEMENT OF FINANCIAL POSITION:

ASSETS

JUNE 30, 2024

Cash	\$3,202,544
Investments	\$8,335,668
Accounts Receivable	\$1,126,733
Prepays	\$35,960
Lease Assets	\$492,419
PP&E	\$112,471
Total Assets	\$13,305,795

LIABILITIES AND NET ASSETS

Short Term Payables	\$1,018,131
Long Term Payables	\$3,199,457
Lease Liabilities	\$540,101
Funds Held for Others	\$14,279
Total Liabilities	\$4,771,968

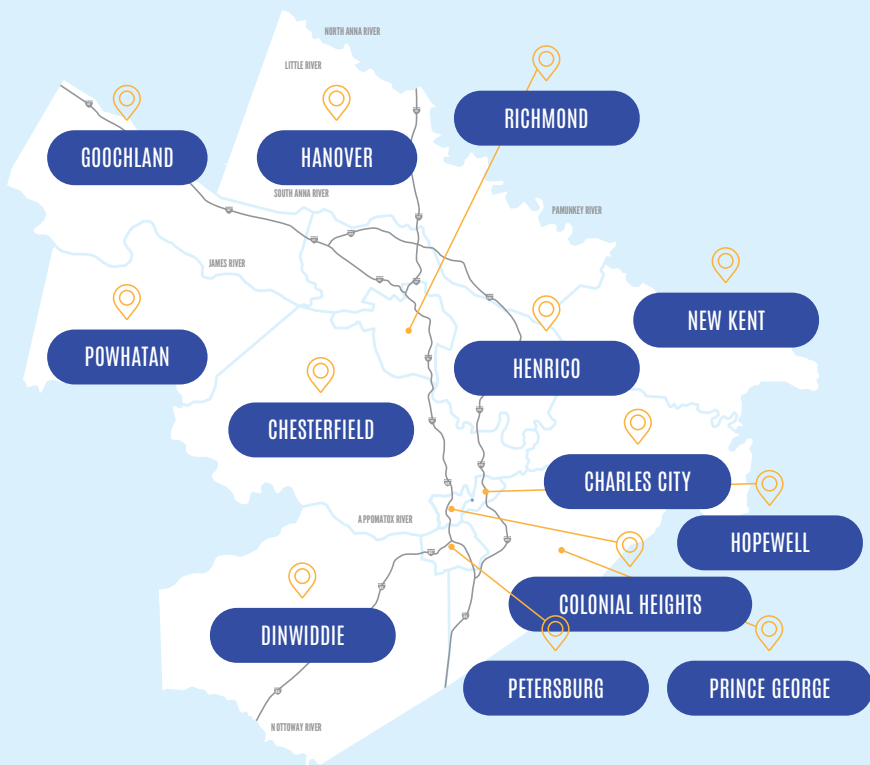
NET ASSETS

Without Donor Restrictions	\$7,288,201
With Donor Restrictions	\$1,245,626
Total Net Assets	\$8,533,827
Total Liabilities and Net Assets	\$13,305,795



REACH

We support low-income and other vulnerable groups of children, families, and older adults in 13 localities with over one million residents. Our extensive reach across multiple communities allows us to share innovations and scale solutions, improving lives throughout our region.





7814 Carousel Lane, #400
Richmond, VA 23294



YourUnitedWay.org
connect@yourunitedway.org
(804) 771-5820

For more than a century, United Way has connected people and resources to address the needs of our most vulnerable residents and drive solutions to root causes.